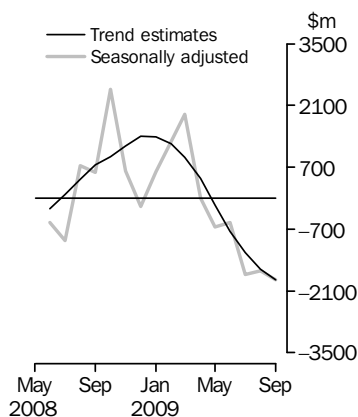


INTERNATIONAL TRADE IN GOODS AND SERVICES

AUSTRALIA

EMBARGO: 11.30AM (CANBERRA TIME) THURS 5 NOV 2009

Balance on Goods and Services



KEY FIGURES

| | Jul 2009 | Aug 2009 | Sep 2009 | Aug 09 to Sep 09 % |
|--|-------------|-------------|-------------|-----------------------------|
| | \$m | \$m | \$m | change |
| BALANCE ON GOODS AND SERVICES | | | | |
| Trend estimates | -1 234 | -1 612 | -1 851 | .. |
| Seasonally adjusted | -1 729 | -1 651 | -1 849 | .. |
| CREDITS (Exports of goods & services) | | | | |
| Trend estimates | 19 782 | 19 497 | 19 390 | -1 |
| Seasonally adjusted | 19 736 | 19 332 | 20 214 | 5 |
| DEBITS (Imports of goods & services) | | | | |
| Trend estimates | 21 017 | 21 110 | 21 241 | 1 |
| Seasonally adjusted | 21 465 | 20 983 | 22 064 | 5 |

.. not applicable

KEY POINTS

BALANCE ON GOODS AND SERVICES

- The trend estimate of the *balance on goods and services* was a deficit of \$1,851m in September 2009, an increase of \$239m (15%) on a revised deficit in August 2009.
- In seasonally adjusted terms, the *balance on goods and services* was a deficit of \$1,849m in September 2009, an increase of \$198m (12%) on a revised deficit in August 2009.

CREDITS (EXPORTS OF GOODS & SERVICES)

- Seasonally adjusted, *goods and services credits* rose \$882m (5%) to \$20,214m. *Non-monetary gold* rose \$538m (64%), *non-rural goods* rose \$280m (2%) with the *coal, coke and briquettes* component up \$242m (9%) and *rural goods* fell \$74m (3%). *Services credits* rose \$137m (3%).

DEBITS (IMPORTS OF GOODS & SERVICES)

- Seasonally adjusted, *goods and services debits* rose \$1,081m (5%) to \$22,064m. *Intermediate and other merchandise goods* rose \$656m (10%) with the *fuels and lubricants* component up \$448m (25%), *non-monetary gold* rose \$182m (33%), *consumption goods* rose \$123m (2%) and *capital goods* rose \$74m (2%). *Services debits* rose \$47m (1%).

INQUIRIES

For further information
contact Selvi Sekhar on
Canberra (02) 6252 5540
for goods, and
Karen McGuigan on
Canberra (02) 6252 5415
for services.

NOTES

FORTHCOMING ISSUES

| ISSUE | RELEASE DATE |
|---------------|-----------------|
| October 2009 | 9 December 2009 |
| November 2009 | 7 January 2010 |
| December 2009 | 3 February 2010 |
| January 2010 | 4 March 2010 |
| February 2010 | 1 April 2010 |
| March 2010 | 6 May 2010 |

.....

REVISIONS

Revisions have been made to incorporate the latest available data relating to merchandise trade and international trade in services. Details of the revisions, in original terms are shown in Table 17. These revisions have:

- increased the deficit on goods and services for August 2009 by \$108m
- increased the surplus on goods and services for 2008–09 by \$371m.

Seasonally adjusted and trend series have been revised as a result of revisions to the original series, the incorporation of estimates for the latest month and the revision of seasonal factors under the concurrent seasonal adjustment methodology.

INFORMATION PAPERS

The *Information paper: Implementation of revised international statistical standards in ABS National and International Accounts* (cat no. 5310.0.55.002) was released on 28 October 2009. The paper describes the impact of the international standards on Australia's macro economic accounts including key aggregates for the balance of payments and international investment position. Technical information included in this paper describes the most significant changes in more detail.

An *Information paper: Revisions to international standards in quarterly Balance of Payments and International Investment Position statistics from September 2009, 2009* (cat. no. 5302.0.55.002) was released on 22 July 2009. New series identifiers for the time series spreadsheets in the quarterly publication are scheduled to be released on 6 November 2009.

INTERNATIONAL TRADE IN SERVICES

International Trade in Services by Country, by State and by Detailed Services Category, Financial Year, 2008–09 (cat. no. 5368.0.55.003) is released concurrently with this issue. The data cubes in this release contain trade in services credits and debits for: country and country groups by financial years; financial years by country and country groups; state by financial years; financial years by state; and detailed services category by financial years.

Brian Pink
Australian Statistician

CONTENTS

page

| | |
|----------------------------|---|
| Time series data | 4 |
|----------------------------|---|

ANALYSIS

| | |
|---------------------------------|---|
| Analysis and comments | 5 |
|---------------------------------|---|

TABLES

INTERNATIONAL TRADE IN GOODS AND SERVICES – BALANCE OF PAYMENTS BASIS

| | |
|---|----|
| 1 Goods and services, summary, seasonally adjusted and trend estimates | 10 |
| 2 Goods and services, summary, original | 11 |
| 3 Goods credits, original | 12 |
| 4 Goods debits, original | 13 |
| 5 Goods credits, seasonally adjusted | 14 |
| 6 Goods debits, seasonally adjusted | 15 |
| 7 Goods credits, trend estimates | 16 |
| 8 Goods debits, trend estimates | 17 |
| 9 Services, summary, original | 18 |
| 10 Services, summary, seasonally adjusted and trend estimates | 19 |
| 11 Services, original, quarterly | 20 |

INTERNATIONAL MERCHANDISE TRADE – RECORDED TRADE BASIS

| | |
|--|----|
| 12 International merchandise exports, by commodity | 21 |
| 13 International merchandise imports, by commodity | 24 |
| 14 International merchandise trade, by country and country groups | 27 |
| 15 International merchandise trade, by state | 28 |

OTHER TABLES

| | |
|---|----|
| 16 Period average exchange rates per Australian dollar | 29 |
| 17 Summary of revisions, goods and services, original | 30 |

OTHER INFORMATION

| | |
|---------------------------------------|----|
| Explanatory Notes | 31 |
| Appendix – Related articles | 37 |

TIME SERIES DATA

TIME SERIES DATA

Data available free on the ABS web site include longer time series of tables in this publication and the additional spreadsheets and data cubes listed below.

31 Merchandise exports by Broad Economic Category (BEC)

32 Merchandise exports by industry of origin (ANZSIC)

33 Merchandise imports by Broad Economic Category (BEC)

34 Merchandise imports by Balance of Payments Broad Economic Category (BoPBEC)

35 Merchandise imports by industry of origin (ANZSIC)

36 Merchandise exports, state by country and country groups

37 Merchandise imports, state by country and country groups

91 Monthly seasonal adjustment factors and forward factors for 12 months.

TRADE IN SERVICES DATA CUBES

Trade in Services data cubes are usually updated on an annual basis - with the March issue of this publication for calendar year (cat. no. 5368.0.55.004) and with the September issue for financial year (cat. no. 5368.0.55.003).

The financial year data cubes on a BPM6 basis are released concurrently with this issue and the calendar year data cubes will be released on BPM6 basis with the October issue.

The following tables are included in both sets of data cubes:

1 International trade in services, credits, state by year

2 International trade in services, credits, year by state

3 International trade in services, debits, state by year

4 International trade in services, debits, year by state

5 International trade in services, credits, year by country and service

6 International trade in services, credits, service by year and by country

7 International trade in services, debits, year by country and service

8 International trade in services, debits, service by year and by country

9 International trade in services, credits and debits, detailed service by year

10 International trade in services, credits, year by country and travel service

11 International trade in services, debits, year by country and travel service

12 International trade in services, credits, education related travel, by educational sector, by type of expenditure by year.

ANALYSIS AND COMMENTS

BALANCE ON GOODS AND SERVICES

The trend estimate of the balance on goods and services was a deficit of \$1,851m in September 2009, an increase of \$239m (15%) on a revised deficit in August 2009.

In seasonally adjusted terms, the balance on goods and services was a deficit of \$1,849m in September 2009, an increase of \$198m (12%) on a revised deficit in August 2009.

The sum of the seasonally adjusted balances for the three months to September 2009 was a deficit of \$5,229m, an increase of \$4,034m on the deficit of \$1,195m for the three months to June 2009. However, if the seasonal factors used in compiling quarterly Balance of Payments are applied, the September quarter 2009 deficit was \$5,399m, an increase of \$4,202m on the revised June quarter 2009 deficit of \$1,197m.

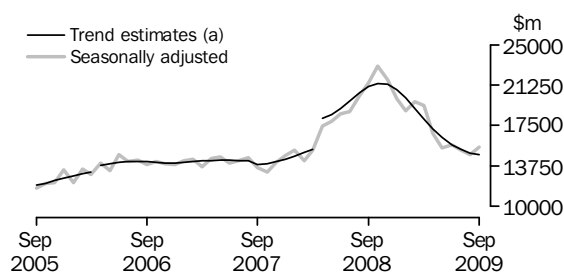
EXPORTS OF GOODS AND SERVICES

Between August 2009 and September 2009 the trend estimate of goods and services credits fell \$107m (1%) to \$19,390m.

In seasonally adjusted terms, goods and services credits rose \$882m (5%) to \$20,214m. Non-monetary gold rose \$538m (64%), non-rural goods rose \$280m (2%) and rural goods fell \$74m (3%). Services credits rose \$137m (3%).

Exports of goods

GOODS CREDITS



(a) Trend breaks of \$500m to April 2006 and \$2,725m to April 2008 have been applied.

RURAL GOODS

In trend terms, exports of rural goods fell \$71m (3%) to \$2,052m.

In seasonally adjusted terms, exports of rural goods fell \$74m (4%) to \$2,042m.

The components contributing to the fall in seasonally adjusted estimates were:

- cereal grains and cereal preparations, down \$50m (10%)
- meat and meat preparations, down \$44m (9%).

In original terms, exports of rural goods fell \$84m (4%) to \$1,987m.

NON-RURAL GOODS

In trend terms, exports of non-rural goods fell \$92m (1%) to \$11,747m.

In seasonally adjusted terms, exports of non-rural goods rose \$280m (2%) to \$12,073m.

The main components contributing to the rise in seasonally adjusted estimates were:

- coal, coke & briquettes, up \$242m (9%)
- other non-rural (incl. sugar and beverages), up \$82m (10%).

ANALYSIS AND COMMENTS *continued*

Exports of goods *continued*

NON-RURAL GOODS *continued*

Partly offsetting these increases was the other mineral fuels component, down \$79m (6%).

In original terms, exports of non-rural goods rose \$178m (1%) to \$12,345m.

NET EXPORTS OF GOODS UNDER MERCHANTING

In trend terms, net exports of goods under merchanting remained steady at \$24m.

In both original terms and seasonally adjusted terms, net exports of goods under merchanting rose \$1m (4%) to \$26m.

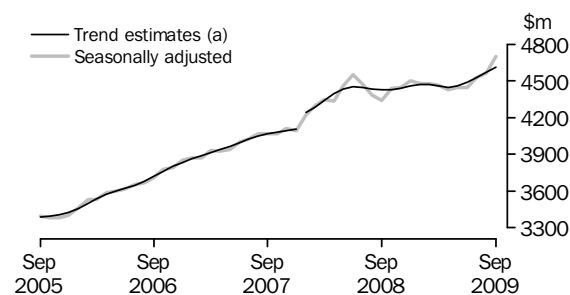
NON-MONETARY GOLD

In trend terms, exports of non-monetary gold rose \$12m (1%) to \$955m.

In both original terms and seasonally adjusted terms, non-monetary gold rose \$538m (64%) to \$1,374m.

Exports of services

SERVICES CREDITS



(a) A trend break of \$106m has been applied to January 2008.

In trend terms, services credits rose \$44m (1%) to \$4,612m.

In seasonally adjusted terms, services credits rose \$137m (3%) to \$4,699m.

The components contributing to the rise in the seasonally adjusted estimates were:

- travel services, up \$131m (5%)
- other services, up \$17m (1%).

Partly offsetting these rises were:

- transport services, down \$5m (1%)
- manufacturing services on physical inputs owned by others, down \$4m (17%)
- maintenance and repair services n.i.e., down \$2m (22%).

Travel services credits for the current month are initially based on an estimate of the number of non-resident arrivals and departures.

In seasonally adjusted terms, tourism related services credits rose \$125m (4%) to \$3,146m.

IMPORTS OF GOODS AND SERVICES

Between August 2009 and September 2009 the trend estimate of goods and services debits rose \$131m (1%) to \$21,241m.

ANALYSIS AND COMMENTS *continued*

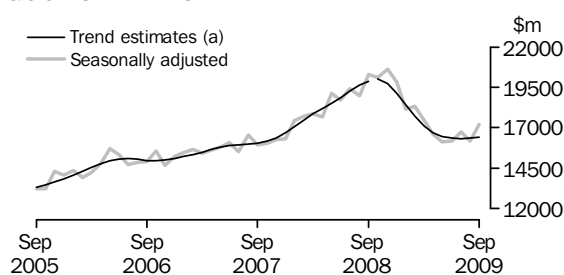
IMPORTS OF GOODS AND SERVICES *continued*

In seasonally adjusted terms, goods and services debits rose \$1,081m (5%) to \$22,064m. Intermediate and other merchandise goods rose \$656m (10%), non-monetary gold rose \$182m (33%), consumption goods rose \$123m (2%) and capital goods rose \$74m (2%). Services debits rose \$47m (1%).

Preliminary analysis shows that, in seasonally adjusted terms, goods imports volumes increased about 4.4% during the September quarter 2009 and the implicit price deflator fell 2.3%. In original terms, the Chain Laspeyres price index fell about 3.4% and the implicit price deflator fell 2.5%. The final volume and price outcomes will be published in the September quarter 2009 issue of *Balance of Payments and International Investment Position, Australia* (cat. no. 5302.0).

Imports of goods

GOODS DEBITS



(a) A trend break of \$167m has been applied to Capital goods n.e.s. debits and related aggregates in October 2008.

CONSUMPTION GOODS

In trend terms, imports of consumption goods fell \$28m (1%) to \$5,120m.

In seasonally adjusted terms, imports of consumption goods rose \$123m (2%) to \$5,123m.

The components contributing to the rise in the seasonally adjusted estimates were:

- non-industrial transport equipment, up \$159m (15%)
- consumption goods n.e.s., up \$45m (3%).

In original terms, imports of consumption goods rose \$648m (13%) to \$5,570m.

CAPITAL GOODS

In trend terms, imports of capital goods rose \$8m to \$3,700m.

In seasonally adjusted terms, imports of capital goods rose \$74m (2%) to \$4,009m.

The main component contributing to the rise in the seasonally adjusted estimates was industrial transport equipment n.e.s., up \$113m (28%).

Partly offsetting this rise was the ADP equipment component, down \$54m (9%).

In original terms, imports of capital goods rose \$442m (12%) to \$4,181m.

ANALYSIS AND COMMENTS *continued*

Imports of goods continued

INTERMEDIATE AND OTHER MERCHANDISE GOODS

In trend terms, imports of intermediate and other merchandise goods rose \$46m (1%) to \$7,120m.

In seasonally adjusted terms, imports of intermediate and other merchandise goods rose \$656m (10%) to \$7,350m.

The main components contributing to the rise in the seasonally adjusted estimates were:

- fuels and lubricants, up \$448m (25%)
- parts for transport equipment, up \$153m (25%)
- other merchandise goods, up \$52m (84%).

In original terms the rise in the fuels and lubricants component was driven by refined petroleum oils, up \$477m (71%) with volumes up 72%. Crude petroleum was down \$23m (2%) with volumes up 3% and prices down 5%. Contributing to the increase in refined petroleum oils were:

- diesel, up \$217m (69%)
- gasoline, up \$209m (156%).

In original terms, imports of intermediate and other merchandise goods rose \$991m (15%) to \$7,560m.

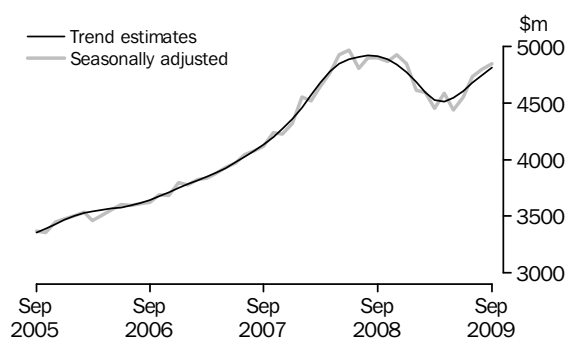
NON-MONETARY GOLD

In trend terms, imports of non-monetary gold rose \$38m (8%) to \$489m.

In both original terms and seasonally adjusted terms, non-monetary gold debits rose \$182m (33%) to \$737m.

Imports of services

SERVICES DEBITS



In trend terms, services debits rose \$67m (1%) to \$4,812m.

In seasonally adjusted terms, services debits rose \$47m (1%) to \$4,845m.

The main components contributing to the rise in the seasonally adjusted estimates were:

- transport services, up \$22m (2%)
- travel services, up \$16m (1%)
- other services, up \$8m (1%).

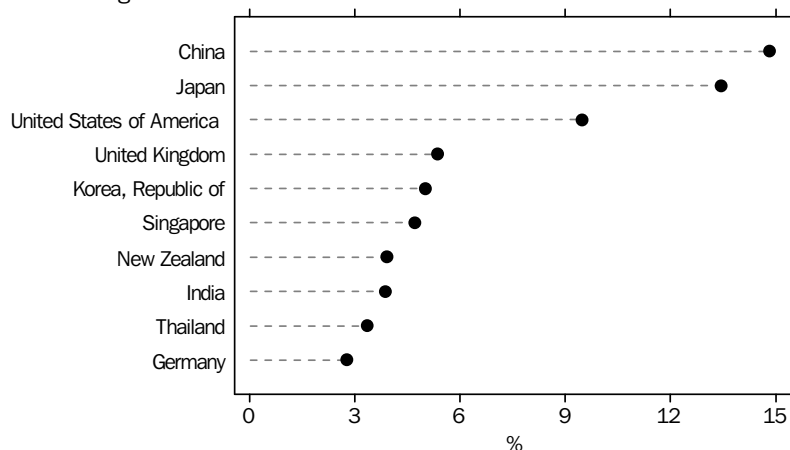
In seasonally adjusted terms, tourism related services debits rose \$14m (1%) to \$2,552m.

ANALYSIS AND COMMENTS *continued*

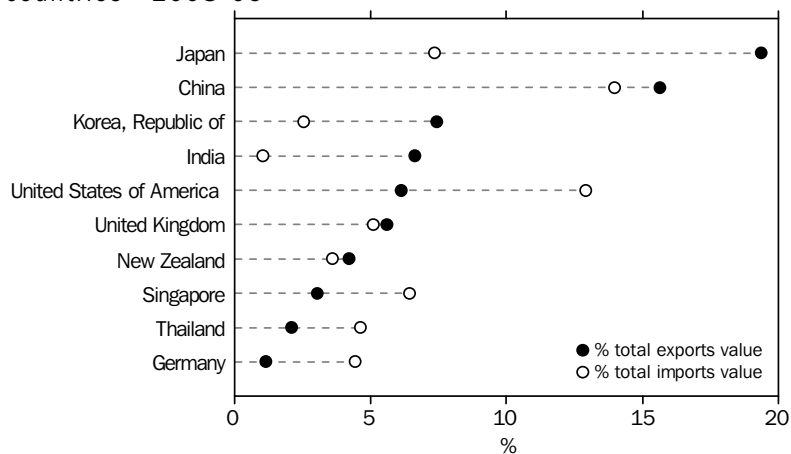
Country breakdown for the financial year 2008–2009

The following charts show Australia's major trading partners for financial year 2008–2009. The charts include both trade in goods (on a recorded trade basis) and trade in services (on a balance of payments basis). The first chart shows the countries with the largest two-way trade i.e. combined trade in both exports and imports of goods and services. The second chart shows separately total exports and total imports, for the ten countries in the first chart.

TOTAL VALUE OF TWO-WAY TRADE, By major countries—2008-09, Percentage share



EXPORTS AND IMPORTS OF GOODS AND SERVICES, By major countries—2008-09



Combining trade in goods (on a recorded trade basis) and trade in services (on a balance of payments basis) provides a good approximation of total trade. Some transactions will be excluded (e.g. Merchanting credits and Goods procured in ports by carriers debits) while the Manufacturing services on physical inputs owned by others will be double counted. These transactions are unlikely to impact on the broad analysis.

GOODS AND SERVICES(a), Summary—Seasonally Adjusted and Trend Estimates

| | Oct 2008(b) | Nov 2008 | Dec 2008 | Jan 2009 | Feb 2009 | Mar 2009 | Apr 2009 | May 2009 | Jun 2009 | Jul 2009 | Aug 2009 | Sep 2009 |
|---|----------------|----------------|----------------|----------------|----------------|----------------|----------------|----------------|----------------|----------------|----------------|----------------|
| | \$m | \$m | \$m | \$m | \$m | \$m | \$m | \$m | \$m | \$m | \$m | \$m |
| SEASONALLY ADJUSTED | | | | | | | | | | | | |
| BALANCE | | | | | | | | | | | | |
| On goods and services | 2 469 | 609 | -192 | 593 | 1 279 | 1 894 | 5 | -655 | -545 | -1 729 | -1 651 | -1 849 |
| CREDITS | | | | | | | | | | | | |
| Total goods and services | 27 444 | 26 169 | 24 464 | 23 366 | 24 185 | 23 815 | 21 207 | 19 896 | 20 184 | 19 736 | 19 332 | 20 214 |
| Total goods | 23 002 | 21 725 | 19 967 | 18 891 | 19 710 | 19 349 | 16 780 | 15 453 | 15 736 | 15 212 | 14 770 | 15 516 |
| Rural goods(c) | 2 596 | 2 478 | 2 523 | 2 475 | 2 546 | 2 760 | 2 439 | 2 320 | 2 307 | 2 196 | 2 116 | 2 042 |
| Non-rural goods(c) | 18 888 | 17 862 | 16 096 | 14 944 | 14 914 | 14 441 | 12 991 | 12 131 | 12 263 | 12 156 | 11 793 | 12 073 |
| Net exports of goods under merchandising(d) | -11 | -11 | -10 | 38 | 38 | 38 | 25 | 25 | 25 | 25 | 25 | 26 |
| Non-monetary gold(d) | 1 528 | 1 397 | 1 358 | 1 433 | 2 212 | 2 109 | 1 325 | 978 | 1 140 | 835 | 836 | 1 374 |
| Total services | 4 442 | 4 444 | 4 498 | 4 475 | 4 474 | 4 466 | 4 427 | 4 442 | 4 448 | 4 525 | 4 562 | 4 699 |
| DEBITS | | | | | | | | | | | | |
| Total goods and services | -24 975 | -25 560 | -24 656 | -22 773 | -22 906 | -21 921 | -21 202 | -20 550 | -20 729 | -21 465 | -20 983 | -22 064 |
| Total goods | -20 108 | -20 633 | -19 814 | -18 163 | -18 317 | -17 468 | -16 619 | -16 115 | -16 176 | -16 733 | -16 185 | -17 218 |
| Consumption goods | -5 202 | -5 332 | -5 423 | -5 150 | -4 470 | -5 126 | -5 066 | -4 990 | -5 190 | -5 248 | -5 000 | -5 123 |
| Capital goods | -4 397 | -4 412 | -5 231 | -4 395 | -4 940 | -4 265 | -3 793 | -3 533 | -3 669 | -3 823 | -3 935 | -4 009 |
| Intermediate and other merchandise goods | -9 726 | -9 306 | -8 390 | -7 517 | -7 215 | -7 014 | -7 176 | -6 708 | -6 970 | -7 407 | -6 694 | -7 350 |
| Non-monetary gold(d) | -784 | -1 583 | -771 | -1 101 | -1 691 | -1 063 | -584 | -884 | -346 | -255 | -555 | -737 |
| Total services | -4 867 | -4 927 | -4 842 | -4 610 | -4 589 | -4 452 | -4 583 | -4 436 | -4 553 | -4 732 | -4 798 | -4 845 |
| TREND ESTIMATES (e) | | | | | | | | | | | | |
| BALANCE | | | | | | | | | | | | |
| On goods and services | 938 | 1 187 | 1 415 | 1 395 | 1 233 | 920 | 442 | -149 | -751 | -1 234 | -1 612 | -1 851 |
| CREDITS | | | | | | | | | | | | |
| Total goods and services | 25 839 | 25 778 | 25 307 | 24 508 | 23 546 | 22 551 | 21 646 | 20 871 | 20 230 | 19 782 | 19 497 | 19 390 |
| Total goods | 21 414 | 21 339 | 20 847 | 20 037 | 19 078 | 18 097 | 17 199 | 16 413 | 15 744 | 15 257 | 14 929 | 14 778 |
| Rural goods(c) | 2 430 | 2 491 | 2 541 | 2 567 | 2 568 | 2 539 | 2 478 | 2 393 | 2 295 | 2 203 | 2 123 | 2 052 |
| Non-rural goods(c) | 17 579 | 17 349 | 16 695 | 15 752 | 14 745 | 13 862 | 13 193 | 12 705 | 12 319 | 12 034 | 11 839 | 11 747 |
| Net exports of goods under merchandising | 15 | 10 | 10 | 16 | 25 | 31 | 32 | 29 | 26 | 25 | 24 | 24 |
| Non-monetary gold | 1 390 | 1 489 | 1 601 | 1 701 | 1 740 | 1 665 | 1 496 | 1 286 | 1 103 | 995 | 943 | 955 |
| Total services | 4 426 | 4 440 | 4 460 | 4 471 | 4 468 | 4 454 | 4 447 | 4 458 | 4 486 | 4 525 | 4 568 | 4 612 |
| DEBITS | | | | | | | | | | | | |
| Total goods and services | -24 901 | -24 591 | -23 892 | -23 112 | -22 313 | -21 631 | -21 204 | -21 020 | -20 980 | -21 017 | -21 110 | -21 241 |
| Total goods | -20 017 | -19 752 | -19 122 | -18 431 | -17 723 | -17 106 | -16 696 | -16 479 | -16 377 | -16 342 | -16 365 | -16 429 |
| Consumption goods | -5 227 | -5 222 | -5 171 | -5 085 | -5 012 | -4 981 | -5 000 | -5 053 | -5 106 | -5 133 | -5 148 | -5 120 |
| Capital goods | -4 431 | -4 391 | -4 373 | -4 267 | -4 134 | -3 997 | -3 873 | -3 779 | -3 722 | -3 696 | -3 692 | -3 700 |
| Intermediate and other merchandise goods | -9 332 | -9 023 | -8 390 | -7 863 | -7 406 | -7 090 | -6 965 | -6 961 | -6 996 | -7 033 | -7 074 | -7 120 |
| Non-monetary gold | -1 027 | -1 116 | -1 189 | -1 216 | -1 170 | -1 038 | -858 | -686 | -553 | -480 | -451 | -489 |
| Total services | -4 884 | -4 839 | -4 771 | -4 681 | -4 590 | -4 525 | -4 508 | -4 541 | -4 604 | -4 675 | -4 745 | -4 812 |
| (a) For sign conventions, see paragraph 15 of the Explanatory Notes. (b) A trend break of \$167m has been applied to Capital goods and related aggregates in October 2008. (c) For all time periods, estimates for sugar, sugar preparations and honey are included in Non-rural goods. (d) These components are not seasonally adjusted. (e) Caution should be used when interpreting recent trend estimates as they may be affected by unusual economic factors. For more details on trend estimates, please see paragraph 19 of the explanatory notes. | | | | | | | | | | | | |

GOODS AND SERVICES(a), Summary—Original

| | Oct 2008 | Nov 2008 | Dec 2008 | Jan 2009 | Feb 2009 | Mar 2009 | Apr 2009 | May 2009 | Jun 2009 | Jul 2009 | Aug 2009 | Sep 2009 |
|--|----------------|----------------|----------------|----------------|----------------|----------------|----------------|----------------|----------------|----------------|----------------|----------------|
| | \$m | \$m | \$m | \$m | \$m | \$m | \$m | \$m | \$m | \$m | \$m | \$m |
| BALANCE | | | | | | | | | | | | |
| On goods and services | 1 339 | 168 | 74 | -510 | 2 201 | 2 779 | 178 | 469 | -783 | -2 227 | -771 | -3 064 |
| CREDITS | | | | | | | | | | | | |
| Total goods and services | 28 682 | 26 255 | 25 506 | 21 817 | 23 088 | 24 544 | 20 764 | 19 987 | 19 589 | 19 780 | 19 753 | 20 249 |
| Total goods | 24 078 | 21 724 | 21 026 | 17 396 | 18 533 | 19 921 | 16 243 | 15 664 | 15 515 | 15 231 | 15 099 | 15 732 |
| Rural goods(b) | 2 680 | 2 509 | 2 619 | 2 197 | 2 533 | 2 986 | 2 488 | 2 471 | 2 221 | 2 110 | 2 071 | 1 987 |
| Non-rural goods(b) | 19 881 | 17 829 | 17 059 | 13 728 | 13 750 | 14 788 | 12 405 | 12 190 | 12 129 | 12 261 | 12 167 | 12 345 |
| Net exports of goods under merchanting | -11 | -11 | -10 | 38 | 38 | 38 | 25 | 25 | 25 | 25 | 25 | 26 |
| Non-monetary gold | 1 528 | 1 397 | 1 358 | 1 433 | 2 212 | 2 109 | 1 325 | 978 | 1 140 | 835 | 836 | 1 374 |
| Total services | 4 604 | 4 531 | 4 480 | 4 421 | 4 555 | 4 623 | 4 521 | 4 323 | 4 074 | 4 549 | 4 654 | 4 517 |
| DEBITS | | | | | | | | | | | | |
| Total goods and services | -27 343 | -26 087 | -25 432 | -22 327 | -20 887 | -21 765 | -20 586 | -19 518 | -20 372 | -22 007 | -20 524 | -23 313 |
| Total goods | -22 121 | -21 346 | -20 325 | -17 482 | -16 902 | -17 555 | -16 092 | -15 311 | -15 832 | -17 000 | -15 785 | -18 048 |
| Consumption goods | -6 135 | -5 793 | -5 528 | -4 846 | -4 039 | -4 944 | -4 730 | -4 542 | -4 927 | -5 411 | -4 922 | -5 570 |
| Capital goods | -4 801 | -4 744 | -5 515 | -4 044 | -4 353 | -4 370 | -3 618 | -3 449 | -3 761 | -3 853 | -3 739 | -4 181 |
| Intermediate and other merchandise goods | -10 401 | -9 226 | -8 511 | -7 491 | -6 819 | -7 178 | -7 160 | -6 436 | -6 798 | -7 481 | -6 569 | -7 560 |
| Non-monetary gold | -784 | -1 583 | -771 | -1 101 | -1 691 | -1 063 | -584 | -884 | -346 | -255 | -555 | -737 |
| Total services | -5 222 | -4 741 | -5 107 | -4 845 | -3 985 | -4 210 | -4 494 | -4 207 | -4 540 | -5 007 | -4 739 | -5 265 |

(a) For sign conventions, see paragraph 15 of the Explanatory Notes.

(b) For all time periods, estimates for sugar, sugar preparations and honey are included in Non-rural goods.

| | | | | | | | 3 MONTHS ENDED SEPTEMBER | | Change |
|---|----------------|----------------|----------------|---------------|---------------|---------------|-----------------------------|---------------|--------------|
| | 2006-07 | 2007-08 | 2008-09 | Jul 2009 | Aug 2009 | Sep 2009 | 2008 | 2009 | |
| | \$m | \$m | \$m | \$m | \$m | \$m | \$m | \$m | % |
| Total goods credits | 169 524 | 182 952 | 231 406 | 15 231 | 15 099 | 15 732 | 61 306 | 46 062 | -24.9 |
| General merchandise | 158 570 | 170 471 | 213 589 | 14 371 | 14 238 | 14 332 | 57 126 | 42 941 | -24.8 |
| <i>Rural goods</i> | 25 090 | 25 494 | 29 361 | 2 110 | 2 071 | 1 987 | 6 657 | 6 168 | -7.3 |
| Meat and meat preparations | 7 080 | 6 542 | 7 454 | 528 | 547 | 523 | 1 787 | 1 598 | -10.6 |
| Cereal grains and cereal preparations | 4 171 | 4 975 | 6 881 | 471 | 503 | 401 | 1 362 | 1 375 | 1.0 |
| Wool and sheepskins | 3 065 | 2 796 | 2 322 | 139 | 94 | 151 | 535 | 384 | -28.2 |
| Other rural(a) | 10 774 | 11 181 | 12 704 | 972 | 927 | 912 | 2 973 | 2 811 | -5.4 |
| <i>Non-rural goods</i> | 133 480 | 144 977 | 184 228 | 12 261 | 12 167 | 12 345 | 50 469 | 36 773 | -27.1 |
| Metal ores and minerals | 35 315 | 41 339 | 51 887 | 3 506 | 3 737 | 3 664 | 14 488 | 10 907 | -24.7 |
| Coal, coke and briquettes | 21 928 | 24 599 | 54 916 | 3 034 | 2 754 | 2 904 | 14 191 | 8 692 | -38.7 |
| Other mineral fuels | 15 641 | 18 889 | 20 711 | 1 498 | 1 430 | 1 276 | 6 054 | 4 204 | -30.6 |
| Metals (excl. non-monetary gold) | 14 821 | 14 039 | 12 389 | 790 | 909 | 801 | 3 811 | 2 500 | -34.4 |
| Machinery | 8 391 | 8 750 | 8 900 | 698 | 647 | 721 | 2 327 | 2 066 | -11.2 |
| Transport equipment | 4 651 | 5 723 | 5 093 | 317 | 356 | 342 | 1 642 | 1 015 | -38.2 |
| Other manufactures | 16 241 | 16 965 | 17 601 | 1 457 | 1 425 | 1 445 | 4 621 | 4 327 | -6.4 |
| Other non-rural (incl. sugar and beverages) | 15 113 | 13 126 | 11 100 | 856 | 806 | 1 071 | 2 845 | 2 733 | -3.9 |
| Goods procured in ports by carriers | 1 379 | 1 547 | 1 631 | 105 | 103 | 121 | 490 | 329 | -32.9 |
| Net exports of goods under merchanting | 214 | 209 | 310 | 25 | 25 | 26 | 153 | 76 | -50.3 |
| Goods acquired under merchanting | | | | | | | | | |
| (negative exports) | -1 303 | -1 528 | -2 394 | -159 | -159 | -158 | -520 | -476 | 8.5 |
| Goods sold under merchanting | 1 517 | 1 737 | 2 704 | 184 | 184 | 184 | 673 | 552 | -18.0 |
| Non-monetary gold | 10 740 | 12 272 | 17 507 | 835 | 836 | 1 374 | 4 027 | 3 045 | -24.4 |

(a) For all time periods, estimates for sugar, sugar preparations and honey are included in Other non-rural.

GOODS DEBITS(a), Original

| | | | | | | | 3 MONTHS ENDED SEPTEMBER | | Change |
|--|-----------------|-----------------|-----------------|----------------|----------------|----------------|-----------------------------|----------------|-------------|
| | 2006-07 | 2007-08 | 2008-09 | Jul 2009 | Aug 2009 | Sep 2009 | 2008 | 2009 | |
| | \$m | \$m | \$m | \$m | \$m | \$m | \$m | \$m | % |
| Total goods debits | -183 572 | -204 846 | -222 520 | -17 000 | -15 785 | -18 048 | -59 554 | -50 833 | 14.6 |
| General merchandise | -178 261 | -197 253 | -210 998 | -16 745 | -15 230 | -17 311 | -56 839 | -49 286 | 13.3 |
| Consumption goods | -54 913 | -59 371 | -61 419 | -5 411 | -4 922 | -5 570 | -15 935 | -15 903 | 0.2 |
| Food and beverages, mainly for consumption | -7 182 | -7 840 | -8 857 | -774 | -727 | -805 | -2 122 | -2 306 | -8.7 |
| Household electrical items | -4 525 | -5 051 | -5 488 | -522 | -496 | -552 | -1 363 | -1 570 | -15.2 |
| Non-industrial transport equipment | -14 894 | -16 872 | -13 247 | -1 154 | -1 015 | -1 290 | -4 121 | -3 459 | 16.1 |
| Textiles, clothing and footwear | -6 805 | -7 051 | -8 287 | -733 | -646 | -659 | -1 995 | -2 038 | -2.2 |
| Toys, books and leisure goods | -4 328 | -4 561 | -5 277 | -414 | -449 | -492 | -1 383 | -1 355 | 2.0 |
| Consumption goods n.e.s. | -17 179 | -17 996 | -20 263 | -1 814 | -1 589 | -1 772 | -4 951 | -5 175 | -4.5 |
| Capital goods | -41 774 | -45 299 | -51 460 | -3 853 | -3 739 | -4 181 | -12 805 | -11 773 | 8.1 |
| Machinery and industrial equipment | -15 330 | -16 480 | -18 490 | -1 352 | -1 277 | -1 323 | -4 667 | -3 952 | 15.3 |
| ADP equipment | -7 008 | -7 074 | -7 257 | -686 | -562 | -534 | -1 714 | -1 782 | -4.0 |
| Telecommunications equipment | -5 315 | -5 790 | -6 432 | -482 | -452 | -580 | -1 513 | -1 514 | -0.1 |
| Civil aircraft(b) | -1 667 | -2 691 | na | na | na | na | na | na | na |
| Industrial transport equipment n.e.s. | -6 463 | -7 502 | -6 527 | -461 | -381 | -585 | -2 350 | -1 427 | 39.3 |
| Capital goods n.e.s.(b) | -5 991 | -5 762 | -11 230 | -872 | -1 067 | -1 159 | -1 487 | -3 098 | -108.3 |
| Intermediate and other merchandise goods | -81 574 | -92 583 | -98 119 | -7 481 | -6 569 | -7 560 | -28 099 | -21 610 | 23.1 |
| Food and beverages, mainly for industry | -819 | -923 | -1 186 | -107 | -91 | -85 | -282 | -283 | -0.4 |
| Primary industrial supplies n.e.s. | -1 552 | -1 477 | -1 899 | -73 | -128 | -106 | -529 | -307 | 42.0 |
| Fuels and lubricants | -21 470 | -29 772 | -28 210 | -2 418 | -1 810 | -2 258 | -9 480 | -6 486 | 31.6 |
| Parts for transport equipment | -8 355 | -8 837 | -8 599 | -597 | -616 | -801 | -2 492 | -2 014 | 19.2 |
| Parts for ADP equipment | -1 620 | -1 115 | -1 067 | -100 | -68 | -61 | -260 | -229 | 11.9 |
| Other parts for capital goods | -11 780 | -11 990 | -14 311 | -1 190 | -1 062 | -1 219 | -3 330 | -3 471 | -4.2 |
| Organic and inorganic chemicals | -4 406 | -4 673 | -5 385 | -350 | -354 | -324 | -1 383 | -1 028 | 25.7 |
| Paper and paperboard | -2 368 | -2 359 | -2 402 | -183 | -179 | -213 | -692 | -575 | 16.9 |
| Textile yarn and fabrics | -1 366 | -1 334 | -1 344 | -102 | -110 | -112 | -350 | -324 | 7.4 |
| Iron and steel | -3 817 | -3 721 | -5 528 | -294 | -264 | -254 | -1 511 | -812 | 46.3 |
| Plastics | -2 957 | -3 064 | -3 028 | -231 | -208 | -228 | -829 | -667 | 19.5 |
| Processed industrial supplies n.e.s. | -17 997 | -20 132 | -21 919 | -1 636 | -1 492 | -1 661 | -5 729 | -4 789 | 16.4 |
| Other merchandise goods(b) | -1 619 | -1 415 | -1 516 | -75 | -62 | -114 | -632 | -251 | 60.3 |
| Goods procured in ports by carriers | -1 448 | -1 771 | -1 725 | -125 | -125 | -124 | -600 | -374 | 37.7 |
| Non-monetary gold | -5 311 | -7 593 | -11 522 | -255 | -555 | -737 | -2 715 | -1 547 | 43.0 |

na not available

(a) For sign conventions, see paragraph 15 of the Explanatory Notes.

(b) From December 2008, the Civil aircraft series and commodities subject to a 'no commodity details' or 'no value details' restriction are included in Capital goods n.e.s.. From September to November 2008 commodities with these restrictions are included in Civil aircraft and for earlier periods are included in Other merchandise goods.

GOODS CREDITS, Seasonally Adjusted

| | Dec 2008 | Jan 2009 | Feb 2009 | Mar 2009 | Apr 2009 | May 2009 | Jun 2009 | Jul 2009 | Aug 2009 | Sep 2009 |
|---|---------------|---------------|---------------|---------------|---------------|---------------|---------------|---------------|---------------|---------------|
| | \$m | \$m | \$m | \$m | \$m | \$m | \$m | \$m | \$m | \$m |
| Total goods credits | 19 967 | 18 891 | 19 710 | 19 349 | 16 780 | 15 453 | 15 736 | 15 212 | 14 770 | 15 516 |
| General merchandise | 18 619 | 17 420 | 17 460 | 17 202 | 15 430 | 14 450 | 14 571 | 14 352 | 13 909 | 14 116 |
| <i>Rural goods</i> | 2 523 | 2 475 | 2 546 | 2 760 | 2 439 | 2 320 | 2 307 | 2 196 | 2 116 | 2 042 |
| Meat and meat preparations | 633 | 597 | 652 | 630 | 584 | 585 | 560 | 553 | 557 | 513 |
| Cereal grains and cereal preparations | 611 | 574 | 589 | 799 | 613 | 561 | 623 | 512 | 498 | 448 |
| Wool and sheepskins | 187 | 182 | 193 | 179 | 173 | 167 | 160 | 159 | 156 | 157 |
| Other rural (a) | 1 092 | 1 123 | 1 112 | 1 152 | 1 069 | 1 006 | 964 | 972 | 905 | 924 |
| <i>Non-rural goods</i> | 16 096 | 14 944 | 14 914 | 14 441 | 12 991 | 12 131 | 12 263 | 12 156 | 11 793 | 12 073 |
| Metal ores and minerals | 3 844 | 4 276 | 4 386 | 4 303 | 3 901 | 3 725 | 3 600 | 3 663 | 3 642 | 3 676 |
| Coal, coke and briquettes(b) | 5 485 | 4 445 | 4 348 | 4 104 | 3 630 | 3 031 | 3 094 | 2 979 | 2 704 | 2 946 |
| Other mineral fuels(c) | 1 917 | 1 722 | 1 653 | 1 496 | 1 330 | 1 276 | 1 365 | 1 350 | 1 291 | 1 212 |
| Metals (excl. non-monetary gold)(c) | 1 006 | 901 | 892 | 812 | 845 | 818 | 859 | 798 | 843 | 846 |
| Machinery | 750 | 690 | 769 | 757 | 672 | 660 | 690 | 670 | 641 | 674 |
| Transport equipment | 483 | 421 | 359 | 355 | 274 | 213 | 271 | 303 | 348 | 325 |
| Other manufactures | 1 507 | 1 442 | 1 480 | 1 489 | 1 375 | 1 392 | 1 403 | 1 390 | 1 374 | 1 351 |
| Other non-rural (incl. sugar and beverages) | 970 | 915 | 893 | 1 005 | 856 | 916 | 882 | 895 | 848 | 930 |
| Goods procured in ports by carriers(c) | 134 | 133 | 134 | 118 | 108 | 100 | 99 | 108 | 102 | 111 |
| Net exports of goods under merchanting(d) | -10 | 38 | 38 | 38 | 25 | 25 | 25 | 25 | 25 | 26 |
| Non-monetary gold(d) | 1 358 | 1 433 | 2 212 | 2 109 | 1 325 | 978 | 1 140 | 835 | 836 | 1 374 |

(a) For all time periods, estimates for sugar, sugar preparations and honey are included in Other non-rural.

(b) Only a length-of-month adjustment has been applied to this component.

(c) In using these seasonally adjusted series, care should be exercised because of the difficulties associated with reliably estimating the seasonal pattern.

(d) This component is not seasonally adjusted.

GOODS DEBITS(a), Seasonally Adjusted

| | Dec 2008 | Jan 2009 | Feb 2009 | Mar 2009 | Apr 2009 | May 2009 | Jun 2009 | Jul 2009 | Aug 2009 | Sep 2009 |
|--|----------------|----------------|----------------|----------------|----------------|----------------|----------------|----------------|----------------|----------------|
| | \$m | \$m | \$m | \$m | \$m | \$m | \$m | \$m | \$m | \$m |
| Total goods debits | -19 814 | -18 163 | -18 317 | -17 468 | -16 619 | -16 115 | -16 176 | -16 733 | -16 185 | -17 218 |
| General merchandise | -19 043 | -17 062 | -16 626 | -16 405 | -16 035 | -15 231 | -15 830 | -16 478 | -15 630 | -16 481 |
| Consumption goods | -5 423 | -5 150 | -4 470 | -5 126 | -5 066 | -4 990 | -5 190 | -5 248 | -5 000 | -5 123 |
| Food and beverages, mainly for consumption | -778 | -757 | -680 | -791 | -733 | -733 | -759 | -788 | -767 | -752 |
| Household electrical items | -437 | -463 | -389 | -414 | -494 | -525 | -535 | -522 | -511 | -485 |
| Non-industrial transport equipment | -1 224 | -1 000 | -790 | -884 | -909 | -871 | -1 091 | -1 099 | -1 057 | -1 216 |
| Textiles, clothing and footwear | -764 | -745 | -639 | -781 | -716 | -664 | -663 | -677 | -634 | -633 |
| Toys, books and leisure goods | -468 | -446 | -377 | -467 | -458 | -461 | -441 | -436 | -428 | -389 |
| Consumption goods n.e.s. | -1 751 | -1 740 | -1 594 | -1 789 | -1 756 | -1 736 | -1 701 | -1 727 | -1 603 | -1 648 |
| Capital goods | -5 231 | -4 395 | -4 940 | -4 265 | -3 793 | -3 533 | -3 669 | -3 823 | -3 935 | -4 009 |
| Machinery and industrial equipment | -1 653 | -1 556 | -1 504 | -1 766 | -1 440 | -1 241 | -1 357 | -1 341 | -1 292 | -1 311 |
| ADP equipment | -660 | -590 | -589 | -584 | -588 | -507 | -566 | -655 | -601 | -547 |
| Telecommunications equipment | -479 | -558 | -584 | -591 | -527 | -521 | -514 | -515 | -509 | -536 |
| Civil aircraft(b)(c) | na | na | na | na | na | na | na | na | na | na |
| Industrial transport equipment n.e.s. | -598 | -500 | -456 | -429 | -337 | -292 | -354 | -421 | -405 | -518 |
| Capital goods n.e.s.(b) | -1 841 | -1 191 | -1 808 | -894 | -900 | -972 | -878 | -890 | -1 127 | -1 096 |
| Intermediate and other merchandise goods | -8 390 | -7 517 | -7 215 | -7 014 | -7 176 | -6 708 | -6 970 | -7 407 | -6 694 | -7 350 |
| Food and beverages, mainly for industry | -106 | -107 | -97 | -98 | -96 | -88 | -90 | -96 | -95 | -81 |
| Primary industrial supplies n.e.s.(d) | -183 | -193 | -99 | -128 | -101 | -100 | -125 | -80 | -120 | -106 |
| Fuels and lubricants(c) | -2 053 | -1 823 | -1 872 | -1 709 | -1 796 | -1 761 | -2 014 | -2 418 | -1 810 | -2 258 |
| Parts for transport equipment | -687 | -669 | -610 | -647 | -644 | -595 | -602 | -584 | -618 | -771 |
| Parts for ADP equipment | -92 | -91 | -87 | -90 | -86 | -75 | -79 | -93 | -72 | -59 |
| Other parts for capital goods | -1 275 | -1 262 | -1 156 | -1 227 | -1 239 | -1 180 | -1 179 | -1 157 | -1 125 | -1 155 |
| Organic and inorganic chemicals | -508 | -445 | -414 | -353 | -398 | -364 | -392 | -356 | -357 | -335 |
| Paper and paperboard | -206 | -207 | -191 | -189 | -176 | -168 | -167 | -171 | -174 | -183 |
| Textile yarn and fabrics | -123 | -114 | -105 | -112 | -108 | -99 | -92 | -102 | -106 | -103 |
| Iron and steel | -652 | -451 | -445 | -333 | -349 | -284 | -273 | -285 | -269 | -257 |
| Plastics | -263 | -235 | -233 | -246 | -226 | -199 | -211 | -234 | -214 | -210 |
| Processed industrial supplies n.e.s. | -1 997 | -1 732 | -1 713 | -1 703 | -1 623 | -1 596 | -1 558 | -1 631 | -1 547 | -1 595 |
| Other merchandise goods(b)(e) | -88 | -83 | -90 | -73 | -220 | -87 | -73 | -75 | -62 | -114 |
| Goods procured in ports by carriers(c) | -157 | -105 | -105 | -105 | -113 | -113 | -115 | -125 | -125 | -124 |
| Non-monetary gold(c) | -771 | -1 101 | -1 691 | -1 063 | -584 | -884 | -346 | -255 | -555 | -737 |

na not available

(a) For sign conventions, see paragraph 15 of the Explanatory Notes.

(b) From December 2008, the Civil aircraft series and commodities subject to a 'no commodity details' or 'no value details' restriction are included in Capital goods n.e.s.. From September to November 2008 commodities with these restrictions are included in Civil aircraft and for earlier periods are included in Other merchandise goods.

(c) These components are not seasonally adjusted.

(d) In using these seasonally adjusted series, care should be exercised because of the difficulties associated with reliably estimating the seasonal pattern.

(e) From July 1981, this component is not seasonally adjusted.

GOODS CREDITS(a), Trend Estimates

| | Dec 2008 | Jan 2009 | Feb 2009 | Mar 2009 | Apr 2009 | May 2009 | Jun 2009 | Jul 2009 | Aug 2009 | Sep 2009 |
|---|---------------|---------------|---------------|---------------|---------------|---------------|---------------|---------------|---------------|---------------|
| | \$m | \$m | \$m | \$m | \$m | \$m | \$m | \$m | \$m | \$m |
| Total goods credits | 20 847 | 20 037 | 19 078 | 18 097 | 17 199 | 16 413 | 15 744 | 15 257 | 14 929 | 14 778 |
| General merchandise | 19 236 | 18 319 | 17 313 | 16 401 | 15 672 | 15 099 | 14 615 | 14 238 | 13 962 | 13 799 |
| <i>Rural goods</i> | 2 541 | 2 567 | 2 568 | 2 539 | 2 478 | 2 393 | 2 295 | 2 203 | 2 123 | 2 052 |
| Meat and meat preparations | 653 | 641 | 625 | 610 | 598 | 584 | 568 | 553 | 540 | 530 |
| Cereal grains and cereal preparations | 562 | 606 | 639 | 653 | 642 | 613 | 575 | 536 | 499 | 462 |
| Wool and sheepskins | 200 | 190 | 183 | 177 | 173 | 168 | 163 | 159 | 156 | 155 |
| Other rural(b) | 1 126 | 1 130 | 1 121 | 1 099 | 1 066 | 1 028 | 989 | 955 | 928 | 906 |
| <i>Non-rural goods</i> | 16 695 | 15 752 | 14 745 | 13 862 | 13 193 | 12 705 | 12 319 | 12 034 | 11 839 | 11 747 |
| Metal ores and minerals | 4 394 | 4 258 | 4 152 | 4 063 | 3 967 | 3 845 | 3 725 | 3 646 | 3 599 | 3 582 |
| Coal, coke and briquettes | 5 499 | 5 011 | 4 448 | 3 942 | 3 564 | 3 306 | 3 103 | 2 937 | 2 813 | 2 741 |
| Other mineral fuels | 1 907 | 1 785 | 1 635 | 1 499 | 1 406 | 1 353 | 1 320 | 1 295 | 1 272 | 1 260 |
| Metals (excl. non-monetary gold) | 1 052 | 957 | 885 | 842 | 826 | 826 | 829 | 830 | 833 | 838 |
| Machinery | 778 | 759 | 738 | 717 | 699 | 686 | 674 | 665 | 658 | 656 |
| Transport equipment | 471 | 422 | 368 | 320 | 289 | 277 | 279 | 291 | 305 | 320 |
| Other manufactures | 1 513 | 1 491 | 1 465 | 1 441 | 1 421 | 1 406 | 1 392 | 1 380 | 1 369 | 1 361 |
| Other non-rural (incl. sugar and beverages) | 936 | 932 | 927 | 922 | 911 | 900 | 893 | 888 | 886 | 884 |
| Goods procured in ports by carriers | 145 | 136 | 126 | 117 | 110 | 106 | 104 | 103 | 103 | 105 |
| Net exports of goods under merchanting | 10 | 16 | 25 | 31 | 32 | 29 | 26 | 25 | 24 | 24 |
| Non-monetary gold | 1 601 | 1 701 | 1 740 | 1 665 | 1 496 | 1 286 | 1 103 | 995 | 943 | 955 |

(a) Caution should be used when interpreting recent trend estimates as they may be affected by unusual economic factors. For more details on trend estimates, please see paragraph 19 of the explanatory notes.

(b) For all time periods, estimates for sugar, sugar preparations and honey are included in Other non-rural.

| | Dec 2008 | Jan 2009 | Feb 2009 | Mar 2009 | Apr 2009 | May 2009 | Jun 2009 | Jul 2009 | Aug 2009 | Sep 2009 |
|--|----------------|----------------|----------------|----------------|----------------|----------------|----------------|----------------|----------------|----------------|
| | \$m | \$m | \$m | \$m | \$m | \$m | \$m | \$m | \$m | \$m |
| Total goods debits | -19 122 | -18 431 | -17 723 | -17 106 | -16 696 | -16 479 | -16 377 | -16 342 | -16 365 | -16 429 |
| General merchandise | -17 933 | -17 215 | -16 553 | -16 069 | -15 838 | -15 793 | -15 824 | -15 862 | -15 914 | -15 940 |
| Consumption goods | -5 171 | -5 085 | -5 012 | -4 981 | -5 000 | -5 053 | -5 106 | -5 133 | -5 148 | -5 120 |
| Food and beverages, mainly for consumption | -752 | -749 | -744 | -742 | -745 | -751 | -758 | -763 | -767 | -764 |
| Household electrical items | -441 | -438 | -441 | -454 | -475 | -497 | -513 | -519 | -521 | -515 |
| Non-industrial transport equipment | -1 078 | -992 | -927 | -893 | -900 | -945 | -1 008 | -1 067 | -1 121 | -1 161 |
| Textiles, clothing and footwear | -733 | -735 | -728 | -717 | -702 | -688 | -674 | -659 | -646 | -629 |
| Toys, books and leisure goods | -443 | -442 | -442 | -444 | -447 | -448 | -444 | -435 | -425 | -410 |
| Consumption goods n.e.s. | -1 724 | -1 728 | -1 730 | -1 731 | -1 730 | -1 724 | -1 710 | -1 690 | -1 668 | -1 639 |
| Capital goods | -4 373 | -4 267 | -4 134 | -3 997 | -3 873 | -3 779 | -3 722 | -3 696 | -3 692 | -3 700 |
| Machinery and industrial equipment | -1 627 | -1 616 | -1 582 | -1 528 | -1 464 | -1 403 | -1 352 | -1 315 | -1 290 | -1 267 |
| ADP equipment | -655 | -628 | -596 | -574 | -568 | -572 | -579 | -584 | -587 | -589 |
| Telecommunications equipment | -548 | -553 | -555 | -553 | -546 | -535 | -523 | -516 | -514 | -514 |
| Civil aircraft(c) | na | na | na | na | na | na | na | na | na | na |
| Industrial transport equipment n.e.s. | -567 | -509 | -451 | -399 | -365 | -355 | -367 | -391 | -420 | -451 |
| Capital goods n.e.s.(c) | np | np | np | np | np | np | np | np | np | np |
| Intermediate and other merchandise goods | -8 390 | -7 863 | -7 406 | -7 090 | -6 965 | -6 961 | -6 996 | -7 033 | -7 074 | -7 120 |
| Food and beverages, mainly for industry | -110 | -106 | -101 | -97 | -94 | -93 | -92 | -91 | -89 | -88 |
| Primary industrial supplies n.e.s. | -182 | -165 | -144 | -124 | -110 | -105 | -104 | -104 | -106 | -105 |
| Fuels and lubricants | -2 233 | -1 971 | -1 805 | -1 744 | -1 796 | -1 890 | -1 978 | -2 057 | -2 122 | -2 181 |
| Parts for transport equipment | -664 | -659 | -648 | -632 | -616 | -609 | -614 | -627 | -647 | -668 |
| Parts for ADP equipment | -92 | -91 | -89 | -87 | -85 | -83 | -81 | -78 | -74 | -70 |
| Other parts for capital goods | -1 255 | -1 251 | -1 236 | -1 219 | -1 202 | -1 189 | -1 176 | -1 162 | -1 150 | -1 136 |
| Organic and inorganic chemicals | -500 | -464 | -427 | -396 | -379 | -372 | -368 | -362 | -355 | -350 |
| Paper and paperboard | -211 | -204 | -194 | -185 | -178 | -173 | -171 | -171 | -173 | -175 |
| Textile yarn and fabrics | -120 | -117 | -112 | -107 | -104 | -102 | -101 | -101 | -101 | -102 |
| Iron and steel | -561 | -506 | -440 | -378 | -331 | -302 | -286 | -273 | -262 | -258 |
| Plastics | -264 | -252 | -239 | -229 | -223 | -219 | -217 | -215 | -214 | -213 |
| Processed industrial supplies n.e.s. | -1 958 | -1 865 | -1 764 | -1 679 | -1 626 | -1 604 | -1 593 | -1 583 | -1 575 | -1 571 |
| Other merchandise goods(c) | -101 | -90 | -94 | -106 | -113 | -107 | -98 | -89 | -82 | -78 |
| Goods procured in ports by carriers | -138 | -122 | -112 | -108 | -108 | -112 | -117 | -121 | -124 | -126 |
| Non-monetary gold | -1 189 | -1 216 | -1 170 | -1 038 | -858 | -686 | -553 | -480 | -451 | -489 |

na not available

np not available for publication but included in totals where applicable, unless otherwise indicated

(a) For sign conventions, see paragraph 15 of the Explanatory Notes.

(b) Caution should be used when interpreting recent trend estimates as they may be affected by unusual economic factors. For more details on trend estimates, please see paragraph 19 of the explanatory notes.

(c) From December 2008, the Civil aircraft series and commodities subject to a 'no commodity details' or 'no value details' restriction are included in Capital goods n.e.s.. From September to November 2008 commodities with these restrictions are included in Civil aircraft and for earlier periods are included in Other merchandise goods. Trend estimates for the Capital goods n.e.s. series from December 2008 have been suppressed due to the change in the composition of the series.

| | | | | | | | 3 MONTHS ENDED SEPTEMBER | | Change |
|---|----------------|----------------|----------------|---------------|---------------|---------------|-----------------------------|----------------|------------|
| | 2006-07 | 2007-08 | 2008-09 | Jul 2009 | Aug 2009 | Sep 2009 | 2008 | 2009 | |
| | \$m | \$m | \$m | \$m | \$m | \$m | \$m | \$m | % |
| Services credits | 45 956 | 50 645 | 53 287 | 4 549 | 4 654 | 4 517 | 13 155 | 13 720 | 4.3 |
| Manufacturing services on physical inputs owned by others | 121 | 77 | 258 | 28 | 24 | 20 | 31 | 72 | 132.3 |
| Maintenance and repair services n.i.e. | 90 | 103 | 86 | 5 | 9 | 7 | 27 | 21 | -22.2 |
| Transport | 8 546 | 9 129 | 7 901 | 597 | 593 | 565 | 2 254 | 1 755 | -22.1 |
| Passenger(c) | 4 237 | 4 118 | 3 653 | 251 | 247 | 220 | 949 | 718 | -24.3 |
| Freight | 765 | 1 463 | 848 | 40 | 40 | 41 | 332 | 121 | -63.6 |
| Other | 2 348 | 2 595 | 2 446 | 204 | 204 | 203 | 668 | 611 | -8.5 |
| Postal and courier services(d) | 1 196 | 953 | 954 | 102 | 102 | 101 | 305 | 305 | — |
| Travel | 25 161 | 28 252 | 30 981 | 2 765 | 2 873 | 2 759 | 7 366 | 8 397 | 14.0 |
| Other services | 12 038 | 13 084 | 14 061 | 1 154 | 1 155 | 1 166 | 3 477 | 3 475 | -0.1 |
| Services debits | -45 139 | -53 330 | -56 499 | -5 007 | -4 739 | -5 265 | -15 148 | -15 011 | 0.9 |
| Manufacturing services on physical inputs owned by others | -3 | -7 | -4 | — | -1 | — | -1 | -1 | — |
| Maintenance and repair services n.i.e. | -131 | -97 | -197 | -17 | -18 | -21 | -33 | -56 | -69.7 |
| Transport | -15 732 | -16 797 | -16 180 | -1 156 | -1 099 | -1 294 | -4 628 | -3 549 | 23.3 |
| Passenger(c) | -6 876 | -7 278 | -6 094 | -488 | -468 | -560 | -1 887 | -1 516 | 19.7 |
| Freight | -8 303 | -8 923 | -9 386 | -591 | -554 | -658 | -2 566 | -1 803 | 29.7 |
| Other | -385 | -417 | -527 | -41 | -41 | -41 | -112 | -123 | -9.8 |
| Postal and courier services(d) | -168 | -179 | -173 | -36 | -36 | -35 | -63 | -107 | -69.8 |
| Travel | -15 934 | -20 153 | -22 133 | -2 265 | -2 053 | -2 379 | -6 044 | -6 697 | -10.8 |
| Other services | -13 339 | -16 276 | -17 985 | -1 569 | -1 568 | -1 571 | -4 442 | -4 708 | -6.0 |
| Memorandum items: | | | | | | | | | |
| Tourism related service credits(e) | 29 398 | 32 370 | 34 634 | 3 016 | 3 120 | 2 979 | 8 315 | 9 115 | 9.6 |
| Tourism related service debits(e) | -22 810 | -27 431 | -28 227 | -2 753 | -2 521 | -2 939 | -7 931 | -8 213 | -3.6 |

— nil or rounded to zero (including null cells)

(a) For sign conventions, see paragraph 15 of the Explanatory Notes.

(b) For more detailed trade in services components, see table 11.

(c) Passenger services includes agency fees and commissions for air transport.

(d) Postal and courier services includes indirect commissions for sea transport.

(e) For a more detailed explanation of tourism related services, see paragraph 27 of the Explanatory Notes.

| | Dec 2008 | Jan 2009 | Feb 2009 | Mar 2009 | Apr 2009 | May 2009 | Jun 2009 | Jul 2009 | Aug 2009 | Sep 2009 |
|--|---------------|---------------|---------------|---------------|---------------|---------------|---------------|---------------|---------------|---------------|
| | \$m | \$m | \$m | \$m | \$m | \$m | \$m | \$m | \$m | \$m |
| SEASONALLY ADJUSTED | | | | | | | | | | |
| Services credits | 4 498 | 4 475 | 4 474 | 4 466 | 4 427 | 4 442 | 4 448 | 4 525 | 4 562 | 4 699 |
| Manufacturing services on physical inputs owned by others(b) | 14 | 24 | 33 | 27 | 31 | 28 | 27 | 28 | 24 | 20 |
| Maintenance and repair services n.i.e.(b) | 12 | 7 | 7 | 8 | 4 | 5 | 3 | 5 | 9 | 7 |
| Transport | 688 | 664 | 634 | 615 | 579 | 553 | 561 | 575 | 575 | 570 |
| Passenger(c) | 321 | 334 | 306 | 292 | 270 | 244 | 254 | 250 | 254 | 248 |
| Freight(d) | 69 | 54 | 53 | 52 | 50 | 50 | 47 | 42 | 39 | 39 |
| Other(d) | 213 | 195 | 196 | 197 | 189 | 189 | 190 | 197 | 198 | 199 |
| Postal and courier services(e) | 85 | 81 | 78 | 74 | 71 | 70 | 70 | 86 | 83 | 85 |
| Travel | 2 573 | 2 622 | 2 632 | 2 642 | 2 708 | 2 742 | 2 727 | 2 732 | 2 767 | 2 898 |
| Other services | 1 211 | 1 158 | 1 169 | 1 174 | 1 104 | 1 114 | 1 130 | 1 185 | 1 187 | 1 204 |
| Services debits | -4 842 | -4 610 | -4 589 | -4 452 | -4 583 | -4 436 | -4 553 | -4 732 | -4 798 | -4 845 |
| Manufacturing services on physical inputs owned by others(b) | — | — | — | — | — | — | — | — | -1 | — |
| Maintenance and repair services n.i.e.(b) | -18 | -23 | -11 | -25 | -27 | -14 | -19 | -17 | -18 | -21 |
| Transport | -1 462 | -1 315 | -1 233 | -1 212 | -1 198 | -1 040 | -1 107 | -1 124 | -1 121 | -1 143 |
| Passenger(c) | -507 | -485 | -486 | -466 | -484 | -366 | -441 | -455 | -472 | -470 |
| Freight | -885 | -772 | -691 | -690 | -655 | -614 | -608 | -607 | -586 | -610 |
| Other(b) | -52 | -45 | -45 | -44 | -43 | -43 | -41 | -41 | -41 | -41 |
| Postal and courier services(e) | -17 | -13 | -12 | -12 | -15 | -17 | -18 | -21 | -22 | -21 |
| Travel | -1 839 | -1 790 | -1 847 | -1 705 | -1 890 | -1 892 | -1 919 | -2 008 | -2 066 | -2 082 |
| Other services | -1 522 | -1 481 | -1 498 | -1 510 | -1 468 | -1 490 | -1 508 | -1 583 | -1 592 | -1 600 |
| Memorandum items: | | | | | | | | | | |
| Tourism related service credits(f) | 2 894 | 2 956 | 2 938 | 2 934 | 2 979 | 2 987 | 2 981 | 2 982 | 3 021 | 3 146 |
| Tourism related service debits(f) | -2 347 | -2 275 | -2 333 | -2 171 | -2 374 | -2 258 | -2 360 | -2 463 | -2 538 | -2 552 |

TREND ESTIMATES

| | | | | | | | | | | |
|---|---------------|---------------|---------------|---------------|---------------|---------------|---------------|---------------|---------------|---------------|
| Services credits | 4 460 | 4 471 | 4 468 | 4 454 | 4 447 | 4 458 | 4 486 | 4 525 | 4 568 | 4 612 |
| Manufacturing services on physical inputs owned by others | 22 | 24 | 27 | 28 | 29 | 29 | 27 | 26 | 24 | 23 |
| Maintenance and repair services n.i.e. | 8 | 8 | 7 | 6 | 5 | 5 | 5 | 6 | 6 | 7 |
| Transport | 672 | 654 | 632 | 609 | 588 | 574 | 568 | 565 | 565 | 567 |
| Passenger(c) | 319 | 314 | 304 | 290 | 274 | 262 | 254 | 249 | 247 | 246 |
| Freight | 64 | 58 | 54 | 52 | 50 | 48 | 46 | 43 | 41 | 39 |
| Other | 207 | 202 | 197 | 193 | 191 | 191 | 193 | 194 | 196 | 198 |
| Postal and courier services(e) | 83 | 80 | 77 | 74 | 73 | 74 | 76 | 79 | 81 | 84 |
| Travel | 2 562 | 2 604 | 2 640 | 2 667 | 2 689 | 2 713 | 2 739 | 2 767 | 2 796 | 2 823 |
| Other services | 1 197 | 1 181 | 1 161 | 1 144 | 1 135 | 1 136 | 1 147 | 1 161 | 1 177 | 1 192 |
| Services debits | -4 771 | -4 681 | -4 590 | -4 525 | -4 508 | -4 541 | -4 604 | -4 675 | -4 745 | -4 812 |
| Manufacturing services on physical inputs owned by others | — | — | — | — | — | — | — | — | — | — |
| Maintenance and repair services n.i.e. | -17 | -18 | -20 | -20 | -20 | -20 | -19 | -19 | -18 | -18 |
| Transport | -1 427 | -1 355 | -1 275 | -1 203 | -1 151 | -1 125 | -1 113 | -1 109 | -1 111 | -1 115 |
| Passenger(c) | -517 | -498 | -477 | -458 | -445 | -440 | -440 | -445 | -453 | -462 |
| Freight | -846 | -795 | -739 | -687 | -648 | -626 | -613 | -603 | -596 | -591 |
| Other | -49 | -48 | -46 | -44 | -43 | -42 | -42 | -41 | -41 | -41 |
| Postal and courier services(e) | -15 | -14 | -13 | -13 | -15 | -16 | -18 | -20 | -21 | -22 |
| Travel | -1 823 | -1 809 | -1 803 | -1 814 | -1 843 | -1 889 | -1 942 | -1 994 | -2 039 | -2 082 |
| Other services | -1 504 | -1 498 | -1 491 | -1 488 | -1 493 | -1 508 | -1 529 | -1 553 | -1 576 | -1 596 |
| Memorandum items: | | | | | | | | | | |
| Tourism related service credits(f) | 2 880 | 2 918 | 2 944 | 2 956 | 2 964 | 2 975 | 2 992 | 3 016 | 3 043 | 3 069 |
| Tourism related service debits(f) | -2 340 | -2 307 | -2 280 | -2 272 | -2 289 | -2 329 | -2 382 | -2 439 | -2 492 | -2 544 |

— nil or rounded to zero (including null cells)

(a) For sign conventions, see paragraph 15 of the Explanatory Notes.

(b) This component is not seasonally adjusted.

(c) Passenger services includes agency fees and commissions for air transport.

(d) In using these seasonally adjusted series, care should be exercised because of the difficulties associated with reliably estimating the seasonal pattern.

(e) Postal and courier services includes indirect commissions for sea transport.

(f) For a more detailed explanation of tourism related services, see paragraph 27 of the Explanatory Notes.

| | CREDITS | | | | DEBITS | | | |
|--|---------------|---------------|---------------|---------------|----------------|----------------|----------------|----------------|
| | Dec Qtr | Mar Qtr | Jun Qtr | Sep Qtr | Dec Qtr | Mar Qtr | Jun Qtr | Sep Qtr |
| | 2008 | 2009 | 2009 | 2009 | 2008 | 2009 | 2009 | 2009 |
| | \$m | \$m | \$m | \$m | \$m | \$m | \$m | \$m |
| Services | 13 615 | 13 599 | 12 918 | 13 720 | -15 070 | -13 040 | -13 241 | -15 011 |
| Manufacturing services on physical inputs owned by others | 57 | 84 | 86 | 72 | -3 | — | — | -1 |
| Maintenance and repair services n.i.e. | 25 | 22 | 12 | 21 | -45 | -59 | -60 | -56 |
| Transport | 2 080 | 1 995 | 1 572 | 1 755 | -4 806 | -3 570 | -3 176 | -3 549 |
| Passenger(b) | 987 | 1 060 | 657 | 718 | -1 611 | -1 322 | -1 274 | -1 516 |
| Freight | 214 | 154 | 148 | 121 | -3 001 | -2 087 | -1 732 | -1 803 |
| Other | 648 | 563 | 567 | 611 | -154 | -134 | -127 | -123 |
| Postal and courier services(c) | 231 | 218 | 200 | 305 | -40 | -27 | -43 | -107 |
| Travel | 7 627 | 8 125 | 7 863 | 8 397 | -5 578 | -5 019 | -5 492 | -6 697 |
| Business | 640 | 711 | 643 | 683 | -751 | -728 | -624 | -671 |
| Personal | 6 987 | 7 414 | 7 220 | 7 714 | -4 827 | -4 291 | -4 868 | -6 026 |
| Education-related | 3 746 | 4 206 | 4 463 | 5 007 | -175 | -177 | -168 | -272 |
| Other(d) | 3 241 | 3 208 | 2 757 | 2 707 | -4 652 | -4 114 | -4 700 | -5 754 |
| Construction | 26 | 21 | 12 | 11 | — | — | — | — |
| Insurance and pension services | 112 | 78 | 64 | 73 | -149 | -145 | -139 | -122 |
| Financial services | 310 | 343 | 287 | 291 | -224 | -173 | -180 | -176 |
| Charges for the use of intellectual property n.i.e. | 170 | 200 | 270 | 286 | -854 | -897 | -909 | -968 |
| Telecommunications, computer and information services | 552 | 507 | 550 | 592 | -591 | -584 | -559 | -595 |
| Telecommunication services | 85 | 76 | 63 | 85 | -172 | -180 | -139 | -168 |
| Computer and information services | 467 | 431 | 487 | 507 | -419 | -404 | -420 | -427 |
| Computer services | 396 | 356 | 399 | 420 | -359 | -336 | -358 | -364 |
| Information services | 8 | 9 | 12 | 11 | -15 | -11 | -10 | -10 |
| Other services | 63 | 66 | 76 | 76 | -45 | -57 | -52 | -53 |
| Other business services | 2 252 | 1 804 | 1 796 | 1 810 | -2 328 | -2 028 | -2 164 | -2 192 |
| Research and development services | 164 | 131 | 143 | 161 | -87 | -60 | -59 | -69 |
| Professional and management consulting services | 1 132 | 870 | 865 | 885 | -782 | -896 | -985 | -957 |
| Legal, accounting, management consulting, public relations and other professional services | 1 020 | 775 | 773 | 794 | -740 | -844 | -938 | -932 |
| Advertising, market research and public opinion polling | 112 | 95 | 92 | 91 | -42 | -52 | -47 | -25 |
| Technical, trade-related and other business services | 956 | 803 | 788 | 764 | -1 459 | -1 072 | -1 120 | -1 166 |
| Architectural, engineering and other technical services | 468 | 386 | 339 | 322 | -568 | -414 | -431 | -446 |
| Waste treatment and de-pollution, agricultural and mining services | 77 | 65 | 59 | 62 | -307 | -183 | -210 | -168 |
| Operational leasing services | 77 | 74 | 63 | 84 | -218 | -198 | -165 | -174 |
| Trade-related commission services | 213 | 178 | 221 | 179 | -57 | -44 | -57 | -70 |
| Other business services n.i.e. | 121 | 100 | 106 | 117 | -309 | -233 | -257 | -308 |
| Personal, cultural and recreational services | 203 | 204 | 189 | 202 | -279 | -362 | -322 | -433 |
| Audiovisual and related services | 45 | 53 | 24 | 28 | -255 | -290 | -300 | -408 |
| Other personal, cultural and recreational services | 158 | 151 | 165 | 174 | -24 | -72 | -22 | -25 |
| Government goods and services n.i.e. | 201 | 216 | 217 | 210 | -213 | -203 | -240 | -222 |
| Memorandum items: | | | | | | | | |
| Gross insurance premiums receivable / payable | 236 | 198 | 168 | 180 | -258 | -262 | -245 | -249 |
| Gross insurance claims payable / receivable | -157 | -133 | -125 | -120 | 256 | 287 | 275 | 278 |
| Tourism related services(e) | 8 614 | 9 185 | 8 520 | 9 115 | -7 189 | -6 341 | -6 766 | -8 213 |

— nil or rounded to zero (including null cells)

(a) For sign conventions, see paragraph 15 of the Explanatory Notes.

(b) Passenger services includes agency fees and commissions for air transport.

(c) Postal and courier services includes indirect commissions for sea transport.

(d) Other personal travel includes health-related travel.

(e) For a more detailed explanation of tourism related services, see paragraph 27 of the Explanatory Notes.

| | | | | | 3 MONTHS ENDED SEPTEMBER | | |
|-----------------------|--|-------------|-------------|-------------|---|--------|-------|
| | | Jul 2009 | Aug 2009 | Sep 2009 | Per cent of total merchandise exports(b) | 2008 | 2009 |
| | | \$m | \$m | \$m | % | \$m | \$m |
| MAJOR COMMODITIES (c) | | | | | | | |
| 011 | Meat of bovine animals | 361 | 378 | 332 | 2.1 | 1 304 | 1 071 |
| 041 | Wheat and meslin | 326 | 377 | 298 | 1.9 | 894 | 1 001 |
| 268 | Wool and other animal hair | 121 | 77 | 131 | 0.8 | 463 | 330 |
| 281 | Iron ore and concentrates | 2 355 | 2 443 | 2 324 | 14.8 | 9 588 | 7 123 |
| 283 | Copper ores and concentrates | 245 | 296 | 370 | 2.4 | 930 | 911 |
| 285 | Aluminium ores and concentrates | 364 | 381 | 375 | 2.4 | 1 596 | 1 120 |
| 321 | Coal, not agglomerated | 3 033 | 2 740 | 2 890 | 18.4 | 14 140 | 8 663 |
| 333 | Crude petroleum oils | 653 | 646 | 598 | 3.8 | 3 106 | 1 898 |
| 334 | Refine petroleum oils | 194 | 161 | 234 | 1.5 | 795 | 589 |
| 343 | Natural gas | 625 | 625 | 480 | 3.1 | 2 190 | 1 731 |
| 682 | Copper | 224 | 195 | 269 | 1.7 | 892 | 688 |
| 684 | Aluminium | 303 | 356 | 280 | 1.8 | 1 578 | 939 |
| 781 | Motor vehicles for transport of people | 132 | 123 | 130 | 0.8 | 1 004 | 384 |
| 971 | Gold, non-monetary | 821 | 817 | 1 295 | 8.3 | 3 962 | 2 933 |

SECTION AND DIVISION OF THE SITC

| | | | | | | | |
|----|---|--------------|--------------|--------------|-------------|---------------|---------------|
| 00 | Food and live animals | | | | | | |
| 01 | Live animals (excl. fish, crustaceans, molluscs and aquatic invertebrates) | 106 | 86 | 110 | 0.7 | 292 | 302 |
| 02 | Meat and meat preparations | 528 | 547 | 522 | 3.3 | 1 787 | 1 597 |
| 03 | Dairy products and birds' eggs | 172 | 150 | 143 | 0.9 | 542 | 465 |
| 04 | Fish (not marine mammals), crustaceans, molluscs and aquatic invertebrates, and preparations thereof | 70 | 97 | 76 | 0.5 | 301 | 243 |
| 05 | Cereals and cereal preparations | 471 | 503 | 401 | 2.6 | 1 361 | 1 375 |
| 06 | Vegetables and fruit | 154 | 153 | 109 | 0.7 | 346 | 415 |
| 07 | Sugars, sugar preparations and honey | 27 | 29 | 21 | 0.1 | 71 | 77 |
| 08 | Coffee, tea, cocoa, spices, and manufactures thereof | 26 | 28 | 27 | 0.2 | 68 | 81 |
| 09 | Feeding stuff for animals (excl. unmilled cereals) | 95 | 93 | 93 | 0.6 | 286 | 281 |
| | Miscellaneous edible products and preparations | 56 | 52 | 52 | 0.3 | 152 | 159 |
| | <i>Total Food and live animals</i> | <i>1 705</i> | <i>1 739</i> | <i>1 553</i> | <i>9.9</i> | <i>5 208</i> | <i>4 996</i> |
| 10 | Beverages and tobacco | | | | | | |
| 11 | Beverages | 202 | 212 | 241 | 1.5 | 724 | 654 |
| 12 | Tobacco and tobacco manufactures | 13 | 11 | 11 | 0.1 | 29 | 35 |
| | <i>Total Beverages and tobacco</i> | <i>215</i> | <i>223</i> | <i>251</i> | <i>1.6</i> | <i>753</i> | <i>689</i> |
| 20 | Crude materials, inedible, except fuels | | | | | | |
| 21 | Hides, skins and furskins, raw | 39 | 39 | 44 | 0.3 | 176 | 122 |
| 22 | Oil-seeds and oleaginous fruits | 30 | 33 | 45 | 0.3 | 37 | 108 |
| 23 | Crude rubber (incl. synthetic and reclaimed) | 1 | 1 | 1 | — | 2 | 2 |
| 24 | Cork and wood | 98 | 85 | 87 | 0.6 | 373 | 270 |
| 25 | Pulp and waste paper | 16 | 19 | 15 | 0.1 | 77 | 51 |
| 26 | Textile fibres and their wastes (not manufactured into yarn or fabric) | 181 | 126 | 195 | 1.2 | 620 | 502 |
| 27 | Crude fertilizers (excl. those of Division 56) and crude minerals (excl. coal, petroleum and precious stones) | 17 | 19 | 28 | 0.2 | 88 | 64 |
| 28 | Metalliferous ores and metal scrap | 3 489 | 3 719 | 3 636 | 23.2 | 14 494 | 10 845 |
| 29 | Crude animal and vegetable materials, n.e.s. | 20 | 17 | 16 | 0.1 | 68 | 53 |
| | <i>Total Crude materials, inedible, except fuels</i> | <i>3 892</i> | <i>4 057</i> | <i>4 067</i> | <i>25.9</i> | <i>15 935</i> | <i>12 017</i> |

— nil or rounded to zero (including null cells)

(a) Some SITC sections and divisions exclude commodities subject to a confidentiality restriction. These are included in Division 98. For more information see paragraph 26 of the Explanatory Notes.

(b) Per cent of total merchandise is calculated for the most recent month.

(c) The 'Major commodities' section lists commodities at the SITC Rev 4 3-digit level which are the most significant (by value) or are of particular interest. Abbreviated descriptors have been used. The list of 'Major commodities' is reviewed annually.

| | | | | | 3 MONTHS ENDED SEPTEMBER | | |
|----------------------------------|--|-------|-------|-------|---|-------------|-------------|
| | | | | | Per cent of total merchandise exports(b) | 2008 | 2009 |
| | | | | | Jul 2009 | Aug 2009 | Sep 2009 |
| | | | | | \$m | \$m | \$m |
| | | | | | % | \$m | \$m |
| SECTION AND DIVISION OF THE SITC | | | | | | | |
| 3 | Mineral fuels, lubricants and related materials | | | | | | |
| 32 | Coal, coke and briquettes | 3 034 | 2 754 | 2 903 | 18.5 | 14 192 | 8 690 |
| 33 | Petroleum, petroleum products and related materials | 849 | 808 | 833 | 5.3 | 3 908 | 2 489 |
| 34 | Gas, natural and manufactured | 747 | 721 | 556 | 3.5 | 2 530 | 2 023 |
| | Total Mineral fuels, lubricants and related materials | 4 629 | 4 282 | 4 291 | 27.3 | 20 630 | 13 203 |
| 4 | Animal and vegetable oils, fats and waxes | | | | | | |
| 41 | Animal oils and fats | 24 | 14 | 35 | 0.2 | 104 | 73 |
| 42 | Fixed vegetable fats and oils, crude, refined or fractionated | 13 | 17 | 9 | 0.1 | 44 | 39 |
| 43 | Fats and oils (processed), waxes and inedible mixtures or preparations, of animal or vegetable origin, n.e.s. | 1 | 1 | 1 | — | 3 | 3 |
| | Total Animal and vegetable oils, fats and waxes | 38 | 32 | 45 | 0.3 | 151 | 115 |
| 5 | Chemicals and related products, n.e.s. | | | | | | |
| 51 | Organic chemicals | 14 | 12 | 14 | 0.1 | 48 | 40 |
| 52 | Inorganic chemicals | 50 | 35 | 49 | 0.3 | 129 | 133 |
| 53 | Dyeing, tanning and colouring materials | 72 | 58 | 52 | 0.3 | 132 | 182 |
| 54 | Medicinal and pharmaceutical products | 373 | 373 | 332 | 2.1 | 1 019 | 1 079 |
| 55 | Essential oils and resinoids and perfume materials, toilet, polishing and cleansing preparations | 52 | 52 | 49 | 0.3 | 151 | 153 |
| 56 | Fertilisers (excl. crude) | 35 | 55 | 72 | 0.5 | 419 | 162 |
| 57 | Plastics in primary forms | 22 | 22 | 24 | 0.2 | 83 | 68 |
| 58 | Plastics in non-primary forms | 41 | 32 | 33 | 0.2 | 88 | 107 |
| 59 | Chemical materials and products, n.e.s. | 83 | 85 | 82 | 0.5 | 267 | 251 |
| | Total Chemicals and related products, nes | 742 | 725 | 707 | 4.5 | 2 336 | 2 174 |
| 6 | Manufactured goods classified chiefly by material | | | | | | |
| 61 | Leather, leather manufactures and dressed furskins, n.e.s. | 19 | 23 | 21 | 0.1 | 78 | 62 |
| 62 | Rubber manufactures, n.e.s. | 18 | 12 | 16 | 0.1 | 68 | 46 |
| 63 | Cork and wood manufactures (excl. furniture) | 15 | 11 | 15 | 0.1 | 42 | 41 |
| 64 | Paper, paperboard and articles of paper pulp, of paper or of paperboard | 63 | 53 | 53 | 0.3 | 170 | 169 |
| 65 | Textile yarn, fabrics, made-up articles n.e.s. and related products | 26 | 25 | 26 | 0.2 | 96 | 77 |
| 66 | Non-metallic mineral manufactures, n.e.s. | 55 | 52 | 92 | 0.6 | 199 | 199 |
| 67 | Iron and steel | 61 | 65 | 75 | 0.5 | 508 | 201 |
| 68 | Non-ferrous metals | 729 | 844 | 726 | 4.6 | 3 302 | 2 298 |
| 69 | Manufactures of metals, n.e.s. | 96 | 103 | 88 | 0.6 | 285 | 286 |
| | Total Manufactured goods classified chiefly by material | 1 080 | 1 188 | 1 112 | 7.1 | 4 750 | 3 380 |
| 7 | Machinery and transport equipment | | | | | | |
| 71 | Power generating machinery and equipment | 71 | 51 | 66 | 0.4 | 271 | 188 |
| 72 | Machinery specialized for particular industries | 158 | 162 | 170 | 1.1 | 492 | 490 |
| 73 | Metal working machinery | 10 | 10 | 16 | 0.1 | 48 | 37 |
| 74 | General industrial machinery and equipment, n.e.s. and machine parts, n.e.s. | 147 | 152 | 166 | 1.1 | 479 | 465 |
| 75 | Office machines and automatic data processing machines | 80 | 76 | 86 | 0.5 | 306 | 242 |
| 76 | Telecommunications and sound recording and reproducing apparatus and equipment | 77 | 76 | 91 | 0.6 | 261 | 244 |
| 77 | Electrical machinery, apparatus and appliances, parts (incl. non electrical counterparts of electrical domestic equip) | 155 | 119 | 125 | 0.8 | 468 | 399 |
| 78 | Road vehicles (incl. air-cushion vehicles) | 218 | 185 | 206 | 1.3 | 1 304 | 609 |
| 79 | Transport equipment (excl. road vehicles) | 99 | 171 | 135 | 0.9 | 337 | 405 |
| | Total Machinery and transport equipment | 1 014 | 1 002 | 1 062 | 6.8 | 3 967 | 3 078 |

— nil or rounded to zero (including null cells)

(b) Per cent of total merchandise is calculated for the most recent month.

(a) Some SITC sections and divisions exclude commodities subject to a confidentiality restriction. These are included in Division 98. For more information see paragraph 26 of the Explanatory Notes.

| | | | | | 3 MONTHS ENDED SEPTEMBER | |
|----------------------------------|--|---------------|---------------|---|--------------------------------|---------------|
| | | | | | | |
| | Jul 2009 | Aug 2009 | Sep 2009 | Per cent of total merchandise exports(b) | 2008 | 2009 |
| | \$m | \$m | \$m | % | \$m | \$m |
| | | | | | | |
| SECTION AND DIVISION OF THE SITC | | | | | | |
| 8 | Miscellaneous manufactured articles | | | | | |
| 81 | Prefabricated buildings and sanitary, plumbing, heating and lighting fixtures and fittings, n.e.s. | | | | | |
| | 10 | 13 | 9 | 0.1 | 40 | 32 |
| 82 | Furniture and parts thereof; bedding, mattresses, mattress supports, cushions and similar stuffed furnishings | | | | | |
| | 6 | 10 | 7 | — | 31 | 24 |
| 83 | Travel goods, handbags and similar containers | | | | | |
| | 2 | 3 | 3 | — | 7 | 8 |
| 84 | Articles of apparel and clothing accessories | | | | | |
| | 18 | 23 | 21 | 0.1 | 69 | 63 |
| 85 | Footwear | | | | | |
| | 3 | 5 | 4 | — | 13 | 12 |
| 87 | Professional, scientific and controlling instruments and apparatus, n.e.s. | | | | | |
| | 181 | 169 | 160 | 1.0 | 502 | 510 |
| 88 | Photographic apparatus, equipment and supplies and optical goods, n.e.s., watches and clocks | | | | | |
| | 29 | 27 | 27 | 0.2 | 86 | 82 |
| 89 | Miscellaneous manufactured articles, n.e.s. | | | | | |
| | 172 | 170 | 193 | 1.2 | 590 | 535 |
| | <i>Total Miscellaneous manufactured articles</i> | <i>423</i> | <i>418</i> | <i>2.7</i> | <i>1 339</i> | <i>1 266</i> |
| 9 | Commodities and transactions not classified elsewhere in the SITC | | | | | |
| 93 | Special transactions and commodities not classified according to kind | | | | | |
| | 162 | 152 | 136 | 0.9 | 340 | 451 |
| 95 | Gold coin whether or not legal tender, and other coin being legal tender | | | | | |
| | 14 | 19 | 79 | 0.5 | 67 | 111 |
| 96 | Coin (excl. gold coin) not being legal tender | | | | | |
| | — | — | — | — | — | — |
| 97 | Gold, non-monetary (excl. gold ores and concentrates) | | | | | |
| | 821 | 817 | 1 295 | 8.3 | 3 962 | 2 933 |
| 98 | Combined confidential items excl. some of SITC 280 (exports only) and some of SITCs 510 and 520 (imports only) | | | | | |
| | 484 | 423 | 670 | 4.3 | 1 310 | 1 577 |
| | <i>Total Commodities and transactions not classified elsewhere in the SITC</i> | <i>1 481</i> | <i>1 410</i> | <i>13.9</i> | <i>5 679</i> | <i>5 073</i> |
| | Total merchandise exports | 15 221 | 15 076 | 100.0 | 60 747 | 45 992 |
| | Balance of Payments Adjustments | 10 | 23 | 37 | 559 | 70 |
| | Goods Credits (exports) on a Balance of Payments Basis | 15 231 | 15 099 | 15 732 | 61 306 | 46 062 |

.. not applicable

— nil or rounded to zero (including null cells)

(a) Some SITC sections and divisions exclude commodities subject to a confidentiality restriction. These are included in Division 98. For more information see paragraph 26 of the Explanatory Notes.

(b) Per cent of total merchandise is calculated for the most recent month.

| | | | | | 3 MONTHS ENDED SEPTEMBER | |
|--|-------------|-------------|-------------|---|---|-------|
| | Jul 2009 | Aug 2009 | Sep 2009 | Per cent of total merchandise imports(b) | 2008 | 2009 |
| | \$m | \$m | \$m | % | \$m | \$m |
| MAJOR COMMODITIES | | | | | | |
| 333 Crude petroleum oils | 1 414 | 1 045 | 1 022 | 5.8 | 5 476 | 3 482 |
| 334 Refined petroleum oils | 898 | 670 | 1 147 | 6.5 | 3 734 | 2 714 |
| 542 Medicaments | 747 | 544 | 618 | 3.5 | 1 746 | 1 909 |
| 641 Paper and paperboard | 148 | 143 | 173 | 1.0 | 588 | 464 |
| 723 Civil engineering and contractors' plant and equipment | 184 | 135 | 210 | 1.2 | 1 031 | 529 |
| 751 Office machines | 187 | 161 | 172 | 1.0 | 509 | 521 |
| 752 Automatic data processing machines | 566 | 429 | 402 | 2.3 | 1 348 | 1 397 |
| 761 Televisions | 318 | 317 | 301 | 1.7 | 801 | 935 |
| 764 Telecommunications equipment | 558 | 515 | 705 | 4.0 | 1 727 | 1 778 |
| 781 Motor vehicles for the transport of people | 1 069 | 901 | 1 180 | 6.7 | 3 677 | 3 150 |
| 782 Motor vehicles for the transport of goods | 341 | 327 | 480 | 2.7 | 1 760 | 1 149 |
| 784 Parts and accessories of motor vehicles | 189 | 179 | 196 | 1.1 | 706 | 564 |
| 971 Gold, non-monetary | 321 | 610 | 747 | 4.2 | 2 662 | 1 678 |

SECTION AND DIVISION OF THE SITC

| | | | | | | | |
|----|---|--------------|--------------|--------------|-------------|--------------|--------------|
| 0 | Food and live animals | | | | | | |
| 00 | Live animals other than fish, crustaceans, molluscs and aquatic invertebrates | 7 | 8 | 4 | — | 25 | 19 |
| 01 | Meat and meat preparations | 51 | 46 | 50 | 0.3 | 118 | 146 |
| 02 | Dairy products and birds' eggs | 50 | 39 | 43 | 0.2 | 144 | 132 |
| 03 | Fish (not marine mammals), crustaceans, molluscs and aquatic invertebrates, and preparations thereof | 104 | 96 | 110 | 0.6 | 287 | 309 |
| 04 | Cereals and cereal preparations | 77 | 71 | 84 | 0.5 | 216 | 233 |
| 05 | Vegetables and fruit | 146 | 118 | 131 | 0.7 | 387 | 396 |
| 06 | Sugars, sugar preparations and honey | 25 | 24 | 30 | 0.2 | 61 | 80 |
| 07 | Coffee, tea, cocoa, spices, and manufactures thereof | 118 | 114 | 114 | 0.6 | 290 | 346 |
| 08 | Feeding stuff for animals (excl. unmilled cereals) | 96 | 26 | 67 | 0.4 | 153 | 189 |
| 09 | Miscellaneous edible products and preparations | 143 | 138 | 129 | 0.7 | 366 | 409 |
| | <i>Total Food and live animals</i> | <i>817</i> | <i>680</i> | <i>763</i> | <i>4.3</i> | <i>2 047</i> | <i>2 261</i> |
| 1 | Beverages and tobacco | | | | | | |
| 11 | Beverages | 116 | 120 | 154 | 0.9 | 370 | 390 |
| 12 | Tobacco and tobacco manufactures | 21 | 18 | 26 | 0.1 | 47 | 65 |
| | <i>Total Beverages and tobacco</i> | <i>137</i> | <i>138</i> | <i>180</i> | <i>1.0</i> | <i>418</i> | <i>455</i> |
| 2 | Crude materials, inedible, except fuels | | | | | | |
| 21 | Hides, skins and furskins, raw | — | — | — | — | 1 | — |
| 22 | Oil-seeds and oleaginous fruits | 5 | 3 | 4 | — | 15 | 12 |
| 23 | Crude rubber (incl. synthetic and reclaimed) | 10 | 11 | 11 | 0.1 | 62 | 33 |
| 24 | Cork and wood | 47 | 45 | 49 | 0.3 | 156 | 141 |
| 25 | Pulp and waste paper | 17 | 9 | 18 | 0.1 | 100 | 45 |
| 26 | Textile fibres and their wastes (not manufactured into yarn or fabric) | 13 | 12 | 12 | 0.1 | 37 | 38 |
| 27 | Crude fertilizers (excl. those of Division 56) and crude minerals (excl. coal, petroleum and precious stones) | 9 | 8 | 8 | — | 181 | 25 |
| 28 | Metalliferous ores and metal scrap | 12 | 69 | 28 | 0.2 | 165 | 109 |
| 29 | Crude animal and vegetable materials, n.e.s. | 25 | 24 | 27 | 0.2 | 72 | 75 |
| | <i>Total Crude materials, inedible, except fuels</i> | <i>137</i> | <i>181</i> | <i>159</i> | <i>0.9</i> | <i>789</i> | <i>478</i> |
| 3 | Mineral fuels, lubricants and related materials | | | | | | |
| 32 | Coal, coke and briquettes | 1 | 1 | 1 | — | 5 | 2 |
| 33 | Petroleum, petroleum products and related materials | 2 341 | 1 758 | 2 199 | 12.5 | 9 391 | 6 298 |
| 34 | Gas, natural and manufactured | 154 | 140 | 135 | 0.8 | 508 | 429 |
| | <i>Total Mineral fuels, lubricants and related materials</i> | <i>2 496</i> | <i>1 899</i> | <i>2 334</i> | <i>13.2</i> | <i>9 904</i> | <i>6 729</i> |

— nil or rounded to zero (including null cells)

(a) Some SITC sections and divisions exclude commodities subject to a confidentiality restriction. These are included in Division 98. For more information see paragraph 26 of the Explanatory Notes.

(b) Per cent of total merchandise is calculated for the most recent month.

(c) The 'Major commodities' section lists commodities at the SITC Rev 4 3-digit level which are the most significant (by value) or are of particular interest. Abbreviated descriptors have been used. The list of 'Major commodities' is reviewed annually.

| | | | | | 3 MONTHS ENDED SEPTEMBER | |
|---|-------------|-------------|-------------|---|--------------------------------|--------|
| | | | | | 2008 | 2009 |
| | | | | | | |
| | Jul 2009 | Aug 2009 | Sep 2009 | Per cent of total merchandise imports(b) | | |
| | \$m | \$m | \$m | % | \$m | \$m |
| SECTION AND DIVISION OF THE SITC | | | | | | |
| 4 Animal and vegetable oils, fats and waxes | | | | | | |
| 41 Animal oils and fats | 1 | 5 | 3 | — | 7 | 8 |
| 42 Fixed vegetable fats and oils, crude, refined or fractionated | 42 | 42 | 42 | 0.2 | 149 | 126 |
| 43 Fats and oils (processed), waxes and inedible mixtures or preparations, of animal or vegetable n.e.s. | 6 | 6 | 7 | — | 16 | 20 |
| <i>Total Animal and vegetable oils, fats and waxes</i> | 49 | 53 | 52 | 0.3 | 172 | 154 |
| 5 Chemicals and related products, n.e.s. | | | | | | |
| 51 Organic chemicals | 236 | 258 | 223 | 1.3 | 848 | 717 |
| 52 Inorganic chemicals | 115 | 96 | 101 | 0.6 | 537 | 312 |
| 53 Dyeing, tanning and colouring materials | 52 | 49 | 54 | 0.3 | 175 | 156 |
| 54 Medicinal and pharmaceutical products | 908 | 685 | 751 | 4.3 | 2 139 | 2 344 |
| 55 Essential oils and resinoids and perfume materials; toilet, polishing and cleansing preparations | 157 | 160 | 186 | 1.1 | 440 | 503 |
| 56 Fertilisers (excl. crude) | 74 | 43 | 42 | 0.2 | 547 | 159 |
| 57 Plastics in primary forms | 101 | 100 | 113 | 0.6 | 469 | 314 |
| 58 Plastics in non-primary forms | 130 | 108 | 115 | 0.7 | 360 | 353 |
| 59 Chemical materials and products, n.e.s. | 160 | 153 | 156 | 0.9 | 534 | 469 |
| <i>Total Chemicals and related products, n.e.s.</i> | 1 932 | 1 652 | 1 742 | 9.9 | 6 048 | 5 327 |
| 6 Manufactured goods classified chiefly by material | | | | | | |
| 61 Leather, leather manufactures, and dressed furskins, n.e.s. | 11 | 11 | 12 | 0.1 | 51 | 34 |
| 62 Rubber manufactures, n.e.s. | 230 | 219 | 238 | 1.3 | 676 | 687 |
| 63 Cork and wood manufactures (excl. furniture) | 46 | 46 | 48 | 0.3 | 173 | 140 |
| 64 Paper, paperboard and articles of paper pulp, of paper or of paperboard | 220 | 214 | 249 | 1.4 | 786 | 682 |
| 65 Textile yarn, fabrics, made-up articles n.e.s., and related products | 207 | 209 | 224 | 1.3 | 648 | 639 |
| 66 Non-metallic mineral manufactures, n.e.s. | 208 | 194 | 240 | 1.4 | 708 | 642 |
| 67 Iron and steel | 294 | 264 | 254 | 1.4 | 1 514 | 812 |
| 68 Non-ferrous metals | 85 | 155 | 196 | 1.1 | 468 | 437 |
| 69 Manufactures of metals, n.e.s. | 474 | 409 | 421 | 2.4 | 1 433 | 1 304 |
| <i>Total Manufactured goods classified chiefly by material</i> | 1 775 | 1 722 | 1 882 | 10.7 | 6 458 | 5 379 |
| 7 Machinery and transport equipment | | | | | | |
| 71 Power generating machinery and equipment | 311 | 303 | 430 | 2.4 | 1 379 | 1 044 |
| 72 Machinery specialised for particular industries | 520 | 575 | 580 | 3.3 | 2 195 | 1 676 |
| 73 Metal working machinery | 54 | 49 | 55 | 0.3 | 187 | 158 |
| 74 General industrial machinery and equipment, n.e.s. and machine parts, n.e.s. | 1 026 | 936 | 1 070 | 6.1 | 2 719 | 3 032 |
| 75 Office machines and automatic data processing machines | 867 | 662 | 635 | 3.6 | 2 143 | 2 164 |
| 76 Telecommunications and sound recording and reproducing apparatus and equipment | 973 | 913 | 1 142 | 6.5 | 2 823 | 3 028 |
| 77 Electrical machinery, apparatus, appliances, parts (incl. non-elec. counterparts of electrical domestic equip) | 833 | 746 | 806 | 4.6 | 2 542 | 2 384 |
| 78 Road vehicles (incl. air-cushion vehicles) | 1 719 | 1 565 | 2 006 | 11.4 | 6 810 | 5 291 |
| 79 Transport equipment (excl. road vehicles) | 148 | 77 | 161 | 0.9 | 1 652 | 386 |
| <i>Total Machinery and transport equipment</i> | 6 452 | 5 826 | 6 886 | 39.0 | 22 450 | 19 164 |

— nil or rounded to zero (including null cells)

(b) Per cent of total merchandise is calculated for the most recent month.

(a) Some SITC sections and divisions exclude commodities subject to a confidentiality restriction. These are included in Division 98. For more information see paragraph 26 of the Explanatory Notes.

| | | | | | 3 MONTHS ENDED SEPTEMBER | |
|---|--|--------------|--------------|---|--------------------------------|---------------|
| | | | | | 2008 | 2009 |
| | | | | | | |
| | Jul 2009 | Aug 2009 | Sep 2009 | Per cent of total merchandise imports(b) | | |
| | \$m | \$m | \$m | % | \$m | \$m |
| SECTION AND DIVISION OF THE SITC | | | | | | |
| 8 | Miscellaneous manufactured articles | | | | | |
| 81 | Prefabricated buildings; sanitary, plumbing, heating and lighting fixtures and fittings, n.e.s. | | | | | |
| | 63 | 71 | 78 | 0.4 | 216 | 211 |
| 82 | Furniture, parts thereof; bedding, mattresses, mattress supports, cushions and similar stuffed furnishings | | | | | |
| | 234 | 225 | 239 | 1.4 | 701 | 699 |
| 83 | Travel goods, handbags and similar containers | | | | | |
| | 70 | 64 | 70 | 0.4 | 196 | 204 |
| 84 | Articles of apparel and clothing accessories | | | | | |
| | 486 | 418 | 422 | 2.4 | 1 307 | 1 326 |
| 85 | Footwear | | | | | |
| | 134 | 118 | 115 | 0.6 | 355 | 367 |
| 87 | Professional, scientific and controlling instruments and apparatus, n.e.s. | | | | | |
| | 407 | 391 | 382 | 2.2 | 1 225 | 1 180 |
| 88 | Photographic apparatus, equipment and supplies and optical goods, n.e.s., watches and clocks | | | | | |
| | 125 | 114 | 126 | 0.7 | 363 | 365 |
| 89 | Miscellaneous manufactured articles, n.e.s. | | | | | |
| | 853 | 883 | 986 | 5.6 | 3 069 | 2 722 |
| | <i>Total Miscellaneous manufactured articles</i> | <i>2 372</i> | <i>2 284</i> | <i>13.7</i> | <i>7 432</i> | <i>7 074</i> |
| 9 | Commodities and transactions not classified elsewhere in the SITC | | | | | |
| 93 | Special transactions and commodities not classified according to kind | | | | | |
| | 4 | 3 | 3 | — | 12 | 10 |
| 95 | Gold coin whether or not legal tender, and other coin being legal tender | | | | | |
| | — | — | — | — | 1 | 1 |
| 96 | Coin (excl. gold coin), not being legal tender | | | | | |
| | — | — | — | — | — | — |
| 97 | Gold, non-monetary (excl. gold ores and concentrates) | | | | | |
| | 321 | 610 | 747 | 4.2 | 2 662 | 1 678 |
| 98 | Combined confidential items excl. some of SITC 280 (exports only) and some of SITCs 510 and 520 (imports only) | | | | | |
| | 222 | 442 | 470 | 2.7 | 607 | 1 133 |
| | <i>Total Commodities and transactions not classified elsewhere in the SITC</i> | <i>547</i> | <i>1 055</i> | <i>6.9</i> | <i>3 283</i> | <i>2 823</i> |
| Total merchandise imports | | | | | 59 000 | 49 843 |
| Balance of Payments Adjustments | | | | | 554 | 990 |
| Goods Debits (imports) on a Balance of Payments Basis | | | | | 59 554 | 50 833 |

.. not applicable

— nil or rounded to zero (including null cells)

(a) Some SITC sections and divisions exclude commodities subject to a confidentiality restriction. These are included in Division 98. For more information see paragraph 26 of the Explanatory Notes.

(b) Per cent of total merchandise is calculated for the most recent month.

INTERNATIONAL MERCHANDISE TRADE(a), By Country and country groups

| | EXPORTS | | | | IMPORTS(b) | | | | BALANCE OF MERCHANDISE TRADE | |
|---------------------------|----------------|---------------|----------------------------|----------------------------|----------------|---------------|----------------------------|----------------------------|------------------------------------|---------------|
| | 2008-09 | Sep | 3 months | 3 months | 2008-09 | Sep | 3 Months | 3 Months | 2008-09 | 3 Months |
| | | 2009 | ended September 2008 | ended September 2009 | | 2009 | Ended September 2008 | Ended September 2009 | | |
| | \$m | \$m | \$m | \$m | \$m | \$m | \$m | \$m | | |
| Belgium | 1 301 | 58 | 526 | 205 | 1 719 | 117 | 505 | 413 | -418 | -209 |
| Brazil | 1 483 | 82 | 562 | 178 | 1 041 | 51 | 406 | 147 | 442 | 31 |
| Canada | 1 549 | 126 | 413 | 333 | 2 437 | 153 | 698 | 456 | -888 | -122 |
| China | 39 321 | 3 154 | 9 214 | 9 996 | 37 044 | 3 236 | 9 145 | 9 172 | 2 278 | 824 |
| Denmark | 176 | 11 | 41 | 36 | 1 070 | 83 | 270 | 252 | -894 | -215 |
| Egypt(c) | 453 | 14 | 98 | 99 | 33 | 2 | 5 | 10 | 420 | 89 |
| Fiji | 374 | 28 | 104 | 87 | 160 | 10 | 40 | 31 | 215 | 56 |
| Finland | 595 | 32 | 190 | 52 | 978 | 66 | 294 | 159 | -383 | -107 |
| France | 1 721 | 50 | 523 | 182 | 4 653 | 343 | 1 507 | 1 008 | -2 932 | -826 |
| Germany | 2 201 | 181 | 504 | 386 | 11 106 | 921 | 3 042 | 2 673 | -8 905 | -2 287 |
| Hong Kong (Sar of China) | 3 192 | 225 | 716 | 611 | 1 424 | 114 | 383 | 321 | 1 767 | 290 |
| India | 15 419 | 1 224 | 4 515 | 3 524 | 2 114 | 150 | 497 | 426 | 13 305 | 3 098 |
| Indonesia | 4 296 | 367 | 1 171 | 1 012 | 5 038 | 464 | 1 464 | 1 200 | -742 | -188 |
| Iran | 661 | 14 | 49 | 30 | 95 | 23 | 47 | 28 | 567 | 3 |
| Iraq | 194 | 72 | 60 | 154 | 31 | — | — | — | 163 | 154 |
| Ireland | 134 | 12 | 40 | 34 | 2 399 | 170 | 553 | 562 | -2 265 | -528 |
| Israel | 262 | 6 | 84 | 49 | 715 | 43 | 201 | 130 | -453 | -81 |
| Italy | 1 556 | 109 | 478 | 227 | 5 339 | 414 | 1 432 | 1 235 | -3 783 | -1 008 |
| Japan | 52 697 | 2 806 | 14 069 | 8 669 | 17 843 | 1 562 | 4 892 | 4 276 | 34 853 | 4 392 |
| Korea, Republic of | 19 269 | 1 312 | 4 685 | 3 624 | 6 528 | 687 | 1 618 | 1 747 | 12 741 | 1 877 |
| Kuwait | 428 | 34 | 119 | 127 | 426 | 42 | 160 | 98 | 2 | 29 |
| Malaysia | 3 729 | 249 | 1 106 | 818 | 8 332 | 505 | 2 365 | 1 750 | -4 603 | -932 |
| Mexico | 902 | 68 | 165 | 201 | 1 324 | 105 | 304 | 285 | -422 | -84 |
| Netherlands | 3 202 | 138 | 870 | 416 | 1 771 | 114 | 480 | 347 | 1 431 | 70 |
| New Zealand | 8 549 | 712 | 2 512 | 2 102 | 7 050 | 574 | 2 030 | 1 665 | 1 500 | 437 |
| Pakistan | 478 | 79 | 115 | 170 | 181 | 11 | 37 | 35 | 296 | 135 |
| Papua New Guinea | 1 611 | 121 | 376 | 454 | 3 013 | 133 | 750 | 635 | -1 402 | -181 |
| Philippines | 1 409 | 89 | 366 | 271 | 605 | 41 | 208 | 113 | 804 | 158 |
| Saudi Arabia | 2 250 | 94 | 476 | 326 | 935 | 39 | 281 | 121 | 1 315 | 205 |
| Singapore | 5 518 | 496 | 1 470 | 1 498 | 13 452 | 941 | 3 878 | 2 504 | -7 934 | -1 006 |
| South Africa | 2 056 | 104 | 647 | 396 | 1 258 | 99 | 389 | 246 | 798 | 150 |
| Spain | 612 | 22 | 229 | 82 | 1 731 | 187 | 476 | 461 | -1 119 | -380 |
| Sweden | 566 | 44 | 289 | 115 | 2 441 | 143 | 703 | 511 | -1 875 | -396 |
| Switzerland | 660 | 15 | 54 | 60 | 2 481 | 207 | 623 | 640 | -1 821 | -580 |
| Taiwan | 8 128 | 518 | 2 154 | 1 612 | 4 089 | 255 | 1 124 | 783 | 4 039 | 830 |
| Thailand | 4 950 | 324 | 1 573 | 1 085 | 10 749 | 1 454 | 2 704 | 3 192 | -5 799 | -2 107 |
| Turkey | 811 | 43 | 332 | 65 | 507 | 64 | 124 | 120 | 304 | -55 |
| United Arab Emirates | 3 604 | 123 | 1 194 | 412 | 1 924 | 189 | 705 | 691 | 1 680 | -278 |
| United Kingdom | 11 509 | 809 | 2 384 | 1 391 | 9 024 | 433 | 2 581 | 1 412 | 2 485 | -21 |
| United States of America | 11 600 | 870 | 3 182 | 2 503 | 25 334 | 1 851 | 6 507 | 5 323 | -13 734 | -2 820 |
| Viet Nam | 1 234 | 115 | 250 | 353 | 4 399 | 224 | 1 621 | 755 | -3 165 | -402 |
| Other Countries(b) | 10 070 | 743 | 2 841 | 2 046 | 16 689 | 1 418 | 3 950 | 3 911 | -6 619 | -1 865 |
| Total | 230 734 | 15 695 | 60 747 | 45 992 | 219 483 | 17 637 | 59 000 | 49 843 | 11 252 | -3 851 |
| APEC | 169 325 | 11 623 | 43 865 | 35 395 | 151 760 | 12 590 | 40 655 | 34 980 | 17 565 | 415 |
| ASEAN | 21 281 | 1 655 | 5 969 | 5 072 | 43 639 | 3 708 | 12 758 | 9 815 | -22 358 | -4 743 |
| Developing Countries | 124 480 | 9 207 | 32 100 | 27 553 | 106 791 | 9 153 | 29 174 | 25 227 | 17 689 | 2 326 |
| Least Developed Countries | 2 144 | 172 | 468 | 466 | 281 | 25 | 54 | 68 | 1 862 | 397 |
| European Union(d) | 24 046 | 1 506 | 6 259 | 3 212 | 45 401 | 3 215 | 12 685 | 9 641 | -21 355 | -6 429 |
| OECD | 119 987 | 7 456 | 31 604 | 20 762 | 110 065 | 8 500 | 29 829 | 24 362 | 9 922 | -3 600 |

— nil or rounded to zero (including null cells)

(a) See Time series spreadsheets for details of all countries.

(b) From September 2008 imports data with confidentiality restrictions 'no commodity details' or 'no value details' are included in Other countries.

(c) Exports of Alumina to Egypt are excluded from country total and included in the 'Other Countries' category.

(d) The European Union includes 27 member countries.

| | | | 3 MONTHS ENDED SEPTEMBER | |
|--|----------------|---------------|---|---------------|
| | 2008-09 | Sep 2009 | 2008 | 2009 |
| | \$m | \$m | \$m | \$m |
| | | | | |
| EXPORTS (a) | | | | |
| New South Wales | 38 764 | 2 655 | 9 369 | 7 895 |
| Victoria | 20 371 | 1 466 | 5 416 | 4 392 |
| Queensland | 56 481 | 3 619 | 15 687 | 10 221 |
| South Australia | 9 524 | 683 | 2 747 | 2 016 |
| Western Australia | 86 878 | 5 991 | 22 798 | 17 417 |
| Tasmania | 3 507 | 216 | 887 | 676 |
| Northern Territory | 6 292 | 307 | 1 673 | 1 117 |
| Australian Capital Territory | 11 | 1 | 5 | 1 |
| State not available for publication(b) | 797 | 35 | 282 | 141 |
| Re-exports | 8 108 | 723 | 1 884 | 2 115 |
| Total | 230 734 | 15 695 | 60 747 | 45 992 |
| | | | | |
| IMPORTS | | | | |
| New South Wales | 79 004 | 6 463 | 20 489 | 18 811 |
| Victoria | 56 457 | 4 598 | 15 965 | 13 076 |
| Queensland | 33 961 | 2 873 | 10 059 | 7 671 |
| South Australia | 6 867 | 531 | 1 964 | 1 550 |
| Western Australia | 33 121 | 2 376 | 8 583 | 6 607 |
| Tasmania | 956 | 68 | 304 | 185 |
| Northern Territory | 4 347 | 260 | 1 142 | 807 |
| Australian Capital Territory | 7 | — | 1 | 2 |
| State not available for publication(c) | 4 761 | 470 | 493 | 1 133 |
| Total | 219 483 | 17 637 | 59 000 | 49 843 |

— nil or rounded to zero (including null cells)

(a) State in which the final stage of production or manufacture occurs.

(b) Exports of Alumina to Bahrain, Egypt and Iceland are excluded from the state totals and included in 'State not available for publication'.

(c) From September 2008 imports data with confidentiality restrictions 'no commodity details' or 'no value details' are included in State not available for publication.

PERIOD AVERAGE EXCHANGE RATES(a), Per Australian dollar

| <i>Period</i> | <i>United States dollar</i> | <i>UK pound sterling</i> | <i>Euro</i> | <i>Japanese yen</i> | <i>Special Drawing Right</i> | <i>Trade-weighted index of value of the A\$(b)</i> |
|----------------|-----------------------------|--------------------------|-------------|---------------------|------------------------------|--|
| FINANCIAL YEAR | | | | | | |
| 2006-07 | 0.7863 | 0.4066 | 0.6018 | 93.21 | 0.5251 | 64.8 |
| 2007-08 | 0.8968 | 0.4479 | 0.6099 | 98.63 | 0.5664 | 69.7 |
| 2008-09 | 0.7456 | 0.4621 | 0.5414 | 73.99 | 0.4869 | 60.2 |
| MONTHS | | | | | | |
| 2008 | | | | | | |
| July | 0.9625 | 0.4840 | 0.6102 | 102.71 | 0.5898 | 73.3 |
| August | 0.8810 | 0.4668 | 0.5890 | 96.33 | 0.5555 | 68.6 |
| September | 0.8205 | 0.4558 | 0.5700 | 87.49 | 0.5271 | 64.9 |
| October | 0.6894 | 0.4070 | 0.5173 | 69.20 | 0.4542 | 56.1 |
| November | 0.6557 | 0.4279 | 0.5155 | 63.55 | 0.4421 | 54.4 |
| December | 0.6690 | 0.4480 | 0.4973 | 61.02 | 0.4407 | 54.6 |
| 2009 | | | | | | |
| January | 0.6784 | 0.4678 | 0.5095 | 61.37 | 0.4478 | 55.4 |
| February | 0.6490 | 0.4503 | 0.5074 | 59.97 | 0.4386 | 54.2 |
| March | 0.6646 | 0.4680 | 0.5093 | 64.92 | 0.4483 | 56.0 |
| April | 0.7122 | 0.4846 | 0.5398 | 70.24 | 0.4773 | 59.1 |
| May | 0.7626 | 0.4954 | 0.5596 | 73.72 | 0.5022 | 61.7 |
| June | 0.8023 | 0.4898 | 0.5721 | 77.39 | 0.5194 | 64.2 |
| July | 0.8040 | 0.4913 | 0.5709 | 75.96 | 0.5180 | 64.0 |
| August | 0.8344 | 0.5047 | 0.5852 | 79.15 | 0.5349 | 66.0 |
| September | 0.8611 | 0.5275 | 0.5915 | 78.74 | 0.5461 | 67.2 |

(a) These exchange rates and the trade-weighted index are derived using rates provided by the Reserve Bank of Australia in respect of each trading day.

(b) May 1970 = 100. The Trade-weighted index is reweighted annually on 1 October and on special occasions as required.

| | 2006-07 | 2007-08 | 2008-09 | Mar 2009 | Apr 2009 | May 2009 | Jun 2009 | Jul 2009 | Aug 2009 |
|--|---------|---------|------------|-----------|------------|-----------|-----------|------------|-------------|
| | \$m | \$m | \$m | \$m | \$m | \$m | \$m | \$m | \$m |
| BALANCE | | | | | | | | | |
| On goods and services | — | — | 371 | 25 | 82 | 62 | 91 | 34 | -108 |
| CREDITS | | | | | | | | | |
| Total goods and services | — | — | -12 | -10 | 32 | 13 | 50 | 63 | -21 |
| Total goods | — | — | -1 | -3 | 42 | 22 | 54 | 37 | -32 |
| Rural goods | — | — | 13 | 13 | — | — | — | 1 | -15 |
| Non-rural goods | — | — | -14 | -16 | 42 | 22 | 54 | 36 | -24 |
| Net exports of goods under merchanting | — | — | — | — | — | — | — | — | — |
| Non-monetary gold | — | — | — | — | — | — | — | — | 7 |
| Total services | — | — | -11 | -7 | -10 | -9 | -4 | 26 | 11 |
| DEBITS | | | | | | | | | |
| Total goods and services | — | — | 383 | 35 | 50 | 49 | 41 | -29 | -87 |
| Total goods | — | — | 2 | -1 | 4 | 3 | -4 | -42 | -34 |
| Consumption goods | — | — | — | -1 | — | — | 1 | 2 | 1 |
| Capital goods | — | — | 5 | 3 | 1 | 2 | -1 | -8 | -7 |
| Intermediate and other merchandise goods | — | — | -3 | -3 | 3 | 1 | -4 | -36 | -28 |
| Non-monetary gold | — | — | — | — | — | — | — | — | — |
| Total services | — | — | 381 | 36 | 46 | 46 | 45 | 13 | -53 |

— nil or rounded to zero (including null cells)

EXPLANATORY NOTES

INTRODUCTION

1 This publication presents preliminary estimates of Australia's international trade in goods and services on a balance of payments basis (Tables 1–11 and 17) and merchandise import and export statistics on a recorded trade basis (Tables 12–15). In addition, Table 16 Exchange rates and trade-weighted indexes are derived by using exchange rates and indexes provided by the Reserve Bank.

2 Merchandise trade statistics on a recorded trade basis are compiled from information submitted by exporters and importers or their agents to the Australian Customs and Border Protection Service (Customs). Adjustments for coverage, timing and valuation are made to recorded trade data to convert them to a balance of payments basis. The services data are sourced from the quarterly Survey of International Trade in Services and a range of administrative data and indicator series.

3 More comprehensive quarterly estimates of Australia's trade in goods and services, together with comprehensive details of Australia's balance of payments are included in the quarterly publication, *Balance of Payments and International Investment Position, Australia* (cat. no. 5302.0). Detailed monthly statistics on merchandise trade are available in Time Series Spreadsheets on the ABS website or by subscription to tailored services. More information on the *International Trade in Services by country, by state and by detailed services category* are available on a financial year basis (cat. no. 5368.0.55.003) with the September issue of this publication and calendar year basis (cat. no. 5368.0.55.004) with the March issue of this publication.

CONCEPTS, SOURCES AND METHODS

4 The conceptual framework used in compiling Australia's merchandise trade statistics can be found in *International Merchandise Trade, Australia: Concepts, Sources and Methods, 2001* (cat. no. 5489.0).

5 The conceptual framework used in compiling Australia's balance of payments statistics is based on the *International Monetary Fund's Balance of Payments and International Investment Position Manual Sixth Edition* (BPM6). Descriptions of the underlying concepts and structure of the balance of payments and the sources, methods and terms used in compiling the estimates are presented in *Balance of Payments and International Investment Position, Australia: Concepts, Sources and Methods, 1998* (cat. no. 5331.0). The current version of this document reflects the international standards prior to BPM6. A revised Concepts, Sources and Methods publication is scheduled for release in late 2010. The *Information paper: Implementation of revised international statistical standards in the ABS National and International Accounts* (cat. no. 5310.0.55.002) describes the key changes introduced with BPM6.

6 To bring merchandise trade statistics on a recorded trade basis to a balance of payments basis, timing adjustments are made to ensure that the transaction is recorded in the period in which ownership changed, rather than in the period in which the transaction was recorded by Customs or the period in which the goods arrived in/departed from an Australian port. Adjustments are also made to account for the change of ownership of goods not included in merchandise trade statistics. Chapter 6 of cat. no. 5331.0 provides more detail on the relationship between statistics on international merchandise trade on a recorded trade basis and on a balance of payments basis.

7 Recorded trade exports data presented for recent months in tables 12–15 of this publication are based on information initially reported by exporters to Customs. At the time of initial reporting to Customs the final prices may not be known for some commodities. Therefore, the information recorded for recent months for commodities like iron ore and coal can include a variety of prices including previous or current contract prices and the prevailing spot prices. Newly negotiated contract prices may not be fully reflected in the data first reported to Customs, and to compensate for this, the Balance of Payments series may reflect adjusted price levels.

EXPLANATORY NOTES *continued*

CONCEPTS, SOURCES AND METHODS *continued*

8 The Concepts, Sources and Methods publications and information papers are available to download for free from the ABS website. Select *Statistics*, then select *By Catalogue Number*, and then the catalogue numbers as above.

CLASSIFICATIONS

9 The merchandise trade data on a recorded trade basis are presented using the following commodity classifications:

- the Harmonised System 2007 (available on request)
- the Standard International Trade Classification (SITC Revision 4)
- the Classification by Broad Economic Categories (BEC)
- the industry classification: Australian and New Zealand Standard Industrial Classification, 2006 (ANZSIC 06).

10 The Balance of Payments Goods and Services series are presented according to three classifications with the goods classifications derived from SITC Revision 4 and BEC. The classifications are:

- for goods:
 - the Balance of Payments Commodities for Exports (BoPCE)
 - the Balance of Payments Broad Economic Categories for Imports (BoPBEC),
- for services:
 - the Extended Balance of Payments Services Classification (EBOPS).

ACCURACY, RELIABILITY AND REVISIONS

11 While every effort is made to ensure the accuracy and reliability of estimates, most series are subject to revision as more complete and accurate information becomes available. Care should be exercised in the use and interpretation of estimates in this publication. The transactions occurring in international trade in goods and services are of many different kinds, and therefore the compilation of trade estimates entails the use of a very wide range of statistical data of varying degrees of accuracy and timeliness. For further information on the monthly services series, see paragraph 25.

12 The revisions are applied differently for merchandise trade and Balance of Payments series. Each month, merchandise trade data are revised for the previous six months to incorporate latest available data.

13 For the Balance of Payments Goods and Services series, in original terms, no revisions are applied in the July, October, January or April issues. This is to ensure the monthly series align with the comparable series in the quarterly publication. In the September issue revisions can be applied to the four previous financial years. In other issues revisions can be applied to the previous and current financial years to incorporate the latest available survey and administrative data.

14 In seasonally adjusted and trend terms, revisions may occur at any time point but tend to focus on the most recent estimates. Please also refer to paragraphs 17 (seasonal adjustment) and 19 (trend estimates) below.

SIGN CONVENTION

15 In keeping with BPM6 conventions, balance of payments basis credit entries are shown with an implied positive sign and debit items are shown as negative entries. For statistics on a recorded trade basis, both imports and exports are shown without sign. The calculation of percentage changes on balance of payments debit items are made without regard to sign. References to balance of payments debit items in Key Figures, Key Points, and Analysis and Comments are also made without regard to sign.

SEASONALLY ADJUSTED AND TREND ESTIMATES

16 The estimates of international trade in goods and services on a balance of payments basis are seasonally adjusted, however the merchandise exports and imports statistics on a recorded trade basis are not. Monthly original estimates are volatile, being subject to calendar-related and large irregular influences. Seasonally adjusted estimates are derived by estimating and removing from the original series systematic calendar related effects, such as seasonal (e.g. Christmas), trading day and moving holiday (e.g. Easter)

EXPLANATORY NOTES *continued*

SEASONALLY ADJUSTED AND TREND ESTIMATES *continued*

influences. Seasonal adjustment does not aim to remove the irregular or non-seasonal influences which may be present in any particular month. These irregular influences may reflect both random economic events and difficulties of statistical recording.

17 The seasonally adjusted statistics in this publication use the concurrent seasonal adjustment technique and Autoregressive Integrated Moving Average (ARIMA) modelling to estimate factors for the current and previous months. Under concurrent seasonal adjustment, the estimates of seasonal factors are fine tuned as new or revised original estimates become available each period. The seasonally adjusted estimates are subject to revisions at each reference month as the estimates of seasonal factors are improved.

18 ARIMA modelling relies on the characteristics of the series being analysed to project future period data. ARIMA modelling is used on a case-by-case basis where it results in reduced revisions to seasonally adjusted series when subsequent data become available. The projected values are temporary, intermediate values, that are only used internally to improve the estimation of the seasonal factors. The projected data do not affect the original estimates and are discarded at the end of the seasonal adjustment process. The ARIMA model is assessed as part of the annual review and, following the 2009 annual review, 40 of the 45 directly seasonally adjusted trade in goods and services time series use an ARIMA model.

19 The month-to-month movements of the seasonally adjusted estimates may not be reliable indicators of underlying behaviour because they include irregular or non-seasonal movements. Trend estimates reduce the effect of these movements as they are derived by applying a 13-term Henderson moving average to the seasonally adjusted series. The 13-term Henderson moving average (like all Henderson averages) is symmetric, but as the end of a time series is approached, asymmetric forms of the average are applied. While the asymmetric weights enable trend estimates for recent months to be produced, it does result in revisions to the estimates for the most recent six months as additional observations become available. Revisions to trend estimates can also occur because of revisions to the original data and as a result of the re-estimation of the seasonal factors. Trend estimates should be used with caution, especially around the time of unusual influences, until these have been appropriately taken into account.

20 Information papers and articles on time series methods are available on the ABS website:

- for seasonal adjustment methods, see *Information Paper: An Introductory Course on Time Series Analysis, Jan 2005* (cat. no. 1346.0.55.001) and *Time Series Analysis Frequently Asked Questions, 2003* (cat. no. 1346.0.55.002)
- for ARIMA modelling, see *Feature article: Use of ARIMA modelling to reduce revisions* in the October 2004 issue of *Australian Economic Indicators* (cat. no. 1350.0)
- for trend estimates methods, see *Information Paper: A Guide to Interpreting Time Series – Monitoring Trends* (cat. no. 1349.0)
- alternatively contact the Assistant Director, Time Series Analysis on (02) 6252 6345 or e-mail <time.series.analysis@abs.gov.au>.

ECONOMIC TERRITORY

21 In accordance with BPM6 definitions, Australia's economic territory, on a balance of payments basis, is the area under the effective control of the Australian government. It includes the land area, airspace, territorial waters, including jurisdiction over fishing rights and rights to fuels and minerals. Australian economic territory also includes territorial enclaves in the rest of the world. These are clearly demarcated areas of land, located in other countries and which are owned or rented by the Australian government for diplomatic, military, scientific or other purposes. Specifically, the economic territory of Australia consists of:

- Geographic Australia which includes Cocos (Keeling) Islands and Christmas Island;

EXPLANATORY NOTES *continued*

ECONOMIC TERRITORY

continued

- Norfolk Island;
- Australian Antarctic Territory;
- Heard Island and McDonald Islands;
- Territory of Ashmore Reef and Cartier Island;
- Coral Sea Islands;
- Australia's territorial enclaves overseas; and
- the Joint Petroleum Development Area (joint territory between Australia and East Timor (Timor-Leste)).

22 Because of administrative complexities and measurement difficulties, Norfolk Island transactions with the rest of the world will not always be captured in all relevant Balance of Payments statistics. Most of the transactions involving Norfolk Island are not material to Australia's trade performance and not capturing these transactions will not distort these statistics. However, any significant transactions will be identified and included in the relevant statistics.

COMMODITY BREAKDOWN OF GOODS

23 For details of the classifications used to present goods exports (credits) and imports (debits) on a balance of payments basis, see tables 6.6 and 6.7, respectively, in *Balance of Payments and International Investment Position, Australia: Concepts, Sources and Methods*, 1998 (cat. no. 5331.0).

24 The recorded trade statistics shown in tables 12 and 13 are classified by the Standard International Trade Classification (SITC). Imports and exports of goods at a more detailed level are available from the Time Series spreadsheets on the ABS website. All data from July 2005 are presented according to SITC Rev 4 and data prior to July 2005 are presented according to SITC Rev 3. For details refer to the 'Classifications and Standards Update' in the July 2008 issue of this publication.

MONTHLY SERVICES SERIES

25 Monthly indicators for many of the services components that are only surveyed quarterly are not available. Monthly estimates for the freight and other transportation components of services credits in table 9 are derived by dividing the quarterly estimate by three. Freight debits are derived directly from imports data for the reference month as a difference between total merchandise cost, insurance and freight (CIF) and free on board (FOB), adjusted to reflect timing and processing adjustments. For freight credits and other transportation credits and debits, estimates are derived by extrapolating the last quarter's data by an average of movements for the same quarter over the three previous years, and then dividing the estimate by three. Similarly other services estimates are derived by extrapolating the last quarter's data by an average of movements for the same quarter over the previous three years, and then dividing the estimate by three.

CONFIDENTIALITY OF MERCHANDISE TRADE STATISTICS

26 The release of statistics for certain merchandise trade commodities is restricted in order to prevent the identification of the activities of an individual business, where this is requested by the business concerned. These restrictions do not affect the total value of exports and imports, but they can affect statistics at the country, state and commodity levels. Imports data that have the confidentiality restrictions 'No commodity details' or 'No value details' are aggregated into a single confidential commodity code. For data prior to September 2008, these data are added back into the appropriate state total and country total (i.e. these totals show the correct level of trade). From September 2008 these confidential data are not added back. Instead the confidential data are published as 'No country details' in the country totals and 'State not available for publication' in the state totals. Therefore, country and state totals from September 2008 may not represent the actual amount of trade in each country/state but only the trade in commodities without a 'No commodity details' or 'No value details' restriction. For information on the confidentiality restrictions applied to the merchandise trade statistics in this publication, refer to the current issue of *International merchandise trade: Confidential Commodities List (CCL)* (cat. no. 5372.0.55.001).

EXPLANATORY NOTES *continued*

TOURISM RELATED SERVICES

27 The tourism related services memorandum items provide timely indicators of the movements in tourism related activities, not an absolute measure of the level of these activities. The tourism related indicator has been derived by combining total travel services (business, education-related and other personal travel) and passenger transportation services (which includes agency fees and commissions for air transport).

SERVICES BY STATE AND BY PARTNER COUNTRY

28 Annual services data by state, by country and detailed services are released twice yearly. Calendar year data are usually released with the March issue of this publication and financial year data are usually released with the September issue. Refer to Time series data for details.

29 Services credits are classified by the state of provision, while services debits are classified by the state of consumption. The state allocations for transportation, travel, postal and courier, and telecommunication services are based on a number of indicators including merchandise trade statistics by state, overseas passenger arrivals and departures by state of clearance and data provided by the Department of Immigration and Citizenship. The allocation for other services (about 25% of all trade in services) is primarily based on the location of the business reporting the information, which serves as a proxy for the state of provision/consumption of that service. The data should be used with care but are considered suitable for analysis over time.

30 A comprehensive explanation of the data sources used and the methodology applied in the compilation of partner country statistics is provided in Chapter 17 of *Balance of Payments and International Investment Position, Australia – Concepts, Sources and Methods* (cat. no. 5331.0). Approximately 7% of total services credits and 5% of total services debits for both 2007–08 and 2008–09 were either confidential, or unable to be allocated to individual countries.

ABS DATA AVAILABLE

31 More detailed balance of payments and recorded merchandise trade data, including forward seasonal factors are available as time series spreadsheets or data cubes from the ABS web site. Merchandise trade data by commodity, country and state that are not on the ABS web site may be available on request. Inquiries should be made to the National Information and Referral Service as shown on the back of this publication.

RELATED PRODUCTS AND PUBLICATIONS

32 Users may also wish to refer to the following publications which can be downloaded free of charge from the ABS web site by using the 'Statistics' tab and selecting the relevant catalogue number:

- *Balance of Payments and International Investment Position, Australia* (cat. no. 5302.0) – issued quarterly
- *International Merchandise Imports, Australia* (cat. no. 5439.0) – issued monthly
- *International Trade Price Indexes, Australia* (cat. no. 6457.0) – issued quarterly
- *Balance of Payments and International Investment Position, Australia: Concepts, Sources and Methods* (cat. no. 5331.0)
- *Information Paper: Quality of Australian Balance of Payments Statistics* (cat. no. 5342.0)
- *International Merchandise Trade, Australia: Concepts, Sources and Methods* (cat. no. 5489.0)
- *A Guide to Australian Balance of Payments and International Investment Position Statistics* (cat. no. 5362.0.55.001).

33 Current publications and other products released by the ABS are available from the Statistics tab on the ABS web site. The ABS also issues a daily *Release Advice* on the web site which details products to be released in the week ahead. A *foreign trade theme page* and a *balance of payments theme page* are available on the ABS website. Select *Themes – Economy – Foreign Trade* or *Balance of Payments*. This page provides direct links to all foreign trade and balance of payments related data and publications, recent changes and

EXPLANATORY NOTES *continued*

RELATED PRODUCTS AND PUBLICATIONS *continued*

forthcoming events, links to relevant web sites and a range of other information about the Australian International Accounts.

ROUNDING

34 Where figures have been rounded, discrepancies may occur between sums of the component items and totals. Percentage movements are calculated from data at the level of precision presented in this publication (i.e. \$m) except for international merchandise trade tables.

ABBREVIATIONS

| | |
|--------|--|
| \$b | billion (thousand million) dollars |
| \$m | million dollars |
| ABS | Australian Bureau of Statistics |
| APEC | Asia Pacific Economic Co-operation |
| ASEAN | Association of South-East Asian Nations |
| n.e.s. | not elsewhere specified |
| n.i.e. | not included elsewhere |
| OECD | Organisation for Economic Co-operation and Development |
| SAR | Special Administrative Region |
| SITC | Standard International Trade Classification |

APPENDIX RELATED ARTICLES

| Article | Source(a) | Issue |
|--|---------------|--------------|
| Investment | | |
| Foreign ownership of equity | 5302.0 | Sep qtr 2007 |
| Kangaroo bonds | 1301.0 | 2006 |
| Foreign currency exposure | 5308.0 | Mar qtr 2005 |
| Gross external debt | 5302.0 | Sep qtr 2003 |
| Balance of payments | | |
| International comparison of balance of payments statistics | (b) 5363.0 | 1998–99 |
| Merchandise trade | | |
| Characteristics of Australian Exporters | 5368.0.55.006 | 2007–08 |
| Export and import invoice currencies, 2006 | 5368.0 | Dec 2007 |
| 100 years of international trade statistics | 5368.0 | Oct 2007 |
| New methodology for deriving counts of Australian exports | 5368.0 | Feb 2006 |
| Australia's Importers, 2003–04 | 5368.0 | Nov 2004 |
| Australia's Exporters, 2003–04 | 5368.0 | Oct 2004 |
| Australia's trade with the USA | 5368.0 | Mar 2004 |
| Foreign ownership of Australian exporters and importers | 5496.0.55.001 | 2002–03 |
| Major commodities traded by Australia, 1991 to 2000 | (b) 5422.0 | Dec qtr 2000 |
| Trade in services | | |
| International trade in services by partner country, 2006, preliminary | 5368.0 | Dec 2006 |
| Changes to International trade in services statistics, August 2006 | 5368.0 | Aug 2006 |
| Changes to International trade in services travel statistics | 5368.0 | Aug 2005 |
| Finance | | |
| Impact of the farm season on Australian production in 2002–03 and 2003–04 | 1301.0 | 2005 |
| Recent trends in construction and first home buyers finance | 5609.0 | Mar 2002 |
| Household sector data in the financial accounts | 5232.0 | Mar qtr 2002 |
| Technical information | | |
| Implementation of new international statistical standards in ABS National and International Accounts, September 2009 | 5310.0.55.002 | Oct 2009 |
| Estimation of Workers' Remittances based on Balance of Payments and International Investment Position Manual, Sixth Edition | 5302.0.55.003 | Sep 2009 |
| Impact of revised international standards on monthly International Trade in Goods and Services | 5368.0.55.014 | Aug 2009 |
| Changes to International Trade in Goods Statistics - Countries and Ports | 5368.0.55.013 | Jul 2009 |
| Revisions to international standards in quarterly Balance of Payments and International Investment Position statistics from September 2009 | 5302.0.55.002 | 2009 |
| Revisions to international standards in monthly international trade in goods and services statistics from August 2009 | 5368.0.55.012 | 2009 |
| Changes to International Trade in Goods Industry Statistics, July 2009 | 5368.0.55.011 | Dec 2008 |
| Technical note 1 - Income on debt | 5302.0 | Jun qtr 2008 |
| Technical note 2 - Use of CDI data | 5302.0 | Jun qtr 2008 |
| Impact of introducing Revision 4 of the Standard International Trade Classification | 5368.0.55.010 | 2008 |
| Changes to international trade statistics July 2008 | 5368.0.55.009 | 2007–08 |
| Introduction of revised international standards in ABS economic statistics in 2009 | 5310.0.55.001 | 2007 |
| Changes on 1 January 2007 to Statistical Codes in the AHECC and the Customs Tariff | 1233.0.55.001 | Nov 2006 |
| ABS implementation in January 2007 of revisions to international trade classifications, 2007 | 5368.0.55.005 | Jun 2006 |
| Revised treatment of Goods for Processing in Merchandise Trade and Balance of Payments Statistics | 5368.0 | May 2006 |
| Impact of Customs and ABS changes on import statistics from October 2005 | 5439.0 | Oct 2005 |
| ABS management of the impact of the implementation of the imports component of the New Customs System | 5439.0 | Aug 2005 |
| Changes to country and port classifications | 5368.0 | May 2003 |
| Implementation of New Customs Systems | 5368.0 | Aug 2004 |
| The effect of customs changes on export statistics | 5422.0 | Jun qtr 2002 |
| Data confidentiality | 5422.0 | Dec qtr 1999 |

- (a) In the ABS web site home page, select Statistics; By Catalogue Number; and click on the specified catalogue number and issue. Note: in some instances, a particular issue of the publication can be found in the Past & Future Releases page of the catalogue.
- (b) This article can be found in pdf format by referring to the Downloads page of the specified issue of this publication on the ABS web site.

FOR MORE INFORMATION . . .

INTERNET

www.abs.gov.au the ABS website is the best place for data from our publications and information about the ABS.

INFORMATION AND REFERRAL SERVICE

Our consultants can help you access the full range of information published by the ABS that is available free of charge from our website. Information tailored to your needs can also be requested as a 'user pays' service. Specialists are on hand to help you with analytical or methodological advice.

PHONE

1300 135 070

EMAIL

client.services@abs.gov.au

FAX

1300 135 211

POST

Client Services, ABS, GPO Box 796, Sydney NSW 2001

FREE ACCESS TO STATISTICS

All statistics on the ABS website can be downloaded free of charge.

WEB ADDRESS

www.abs.gov.au